

Product datasheet for **TA329669**

APOBEC3G Goat Polyclonal Antibody

Product data:

Product Type:	Primary Antibodies
Applications:	IHC
Recommended Dilution:	IHC: 1-2ug/ml
Reactivity:	Human
Host:	Goat
Isotype:	IgG
Clonality:	Polyclonal
Immunogen:	Peptide with sequence C-SKWRKLHRDQE, from the internal region of the protein sequence according to NP_068594.1
Formulation:	Supplied at 0.5 mg/ml in Tris saline, 0.02% sodium azide, pH7.3 with 0.5% bovine serum albumin. Aliquot and store at -20°C. Minimize freezing and thawing.
Concentration:	lot specific
Purification:	Purified from goat serum by ammonium sulphate precipitation followed by antigen affinity chromatography using the immunizing peptide.
Conjugation:	Unconjugated
Storage:	Store at -20°C as received.
Stability:	Stable for 12 months from date of receipt.
Gene Name:	apolipoprotein B mRNA editing enzyme catalytic subunit 3G
Database Link:	NP_068594 Entrez Gene 60489 Human Q9HC16
Background:	This gene is a member of the cytidine deaminase gene family. It is one of seven related genes or pseudogenes found in a cluster, thought to result from gene duplication, on chromosome 22. Members of the cluster encode proteins that are structurally and functionally related to the C to U RNA-editing cytidine deaminase APOBEC1. It is thought that the proteins may be RNA editing enzymes and have roles in growth or cell cycle control. The protein encoded by this gene has been found to be a specific inhibitor of human immunodeficiency virus-1 (HIV-1) infectivity. [provided by RefSeq, Jul 2008]

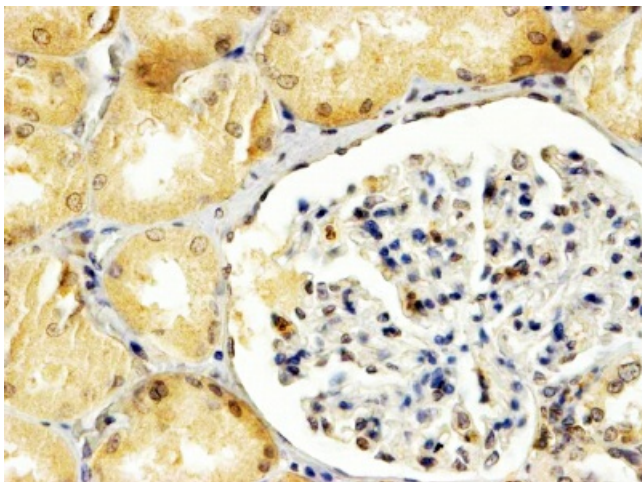


[View online »](#)

Synonyms: A3G; ARCD; ARP-9; ARP9; bK150C2.7; CEM-15; CEM15; dj494G10.1; MDS019

Note: IHC: In paraffin embedded Human Kidney shows weak cytoplasm staining and stronger nuclear staining in a selection of glomerular cells. Also nuclear membrane staining elsewhere.

Product images:



TA329669 (4ug/ml) staining of paraffin embedded Human Kidney. Steamed antigen retrieval with Tris/EDTA buffer pH 9, HRP-staining.