

## Product datasheet for **TA329668**

### VCP Goat Polyclonal Antibody

#### Product data:

Product Type:	Primary Antibodies
Applications:	WB
Recommended Dilution:	WB: 0.01-0.03ug/ml
Reactivity:	Human, Mouse, Rat, Dog, Cow, Saccharomyces cerevisiae
Host:	Goat
Isotype:	IgG
Clonality:	Polyclonal
Immunogen:	Peptide with sequence C-HTKNMKLADDVDLE, from the internal region of the protein sequence according to NP_010157.1
Formulation:	Supplied at 0.5 mg/ml in Tris saline, 0.02% sodium azide, pH7.3 with 0.5% bovine serum albumin. Aliquot and store at -20°C. Minimize freezing and thawing.
Concentration:	lot specific
Purification:	Purified from goat serum by ammonium sulphate precipitation followed by antigen affinity chromatography using the immunizing peptide.
Conjugation:	Unconjugated
Storage:	Store at -20°C as received.
Stability:	Stable for 12 months from date of receipt.
Gene Name:	valosin containing protein
Database Link:	<a href="#">NP_009057</a> <a href="#">Entrez Gene 116643</a> <a href="#">RatEntrez Gene 269523</a> <a href="#">MouseEntrez Gene 481590</a> <a href="#">DogEntrez Gene 7415</a> <a href="#">Human</a> <a href="#">P55072</a>
Background:	The protein encoded by this gene is a member of a family that includes putative ATP-binding proteins involved in vesicle transport and fusion, 26S proteasome function, and assembly of peroxisomes. This protein, as a structural protein, is associated with clathrin, and heat-shock protein Hsc70, to form a complex. It has been implicated in a number of cellular events that are regulated during mitosis, including homotypic membrane fusion, spindle pole body function, and ubiquitin-dependent protein degradation. [provided by RefSeq, Jul 2008]

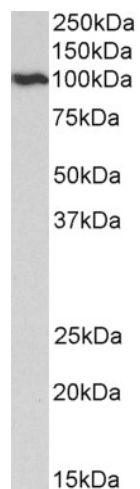


[View online »](#)

**Synonyms:** ALS14; CMT2Y; HEL-220; HEL-S-70; IBMPFD; IBMPFD1; p97; TERA

**Note:** This antibody may cross react in many other species.

**Product images:**



TA329668 (0.01ug/ml) staining of HeLa lysate (35ug protein in RIPA buffer). Primary incubation was 1 hour. Detected by chemiluminescence.