

Product datasheet for **TA329663**

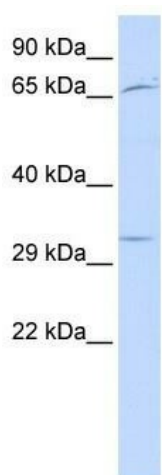
UTF1 Rabbit Polyclonal Antibody

Product data:

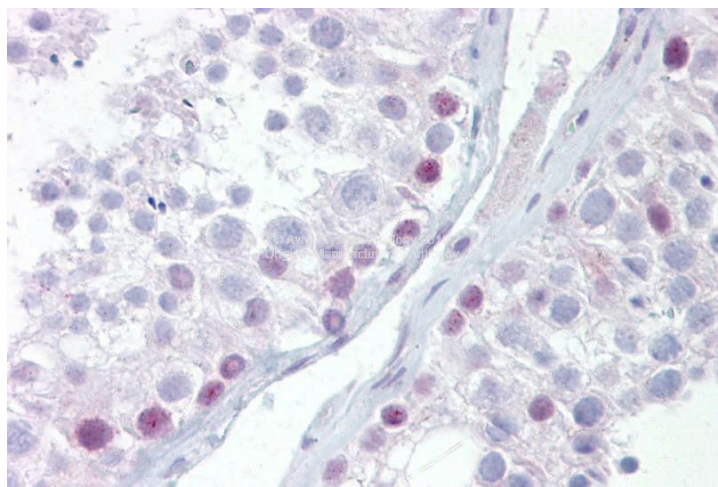
| | |
|-------------------------|---|
| Product Type: | Primary Antibodies |
| Applications: | IHC, WB |
| Recommended Dilution: | WB, IHC |
| Reactivity: | Human |
| Host: | Rabbit |
| Isotype: | IgG |
| Clonality: | Polyclonal |
| Immunogen: | The immunogen for anti-UTF1 antibody: synthetic peptide directed towards the middle region of human UTF1. Synthetic peptide located within the following region: AREDPDSPGPRPEDCAPPPAAPPSTLNTALLQTLGHLGDIANILGPLRDQL |
| Formulation: | Liquid. Purified antibody supplied in 1x PBS buffer with 0.09% (w/v) sodium azide and 2% sucrose. <i>Note that this product is shipped as lyophilized powder to China customers.</i> |
| Conjugation: | Unconjugated |
| Storage: | Store at -20°C as received. |
| Stability: | Stable for 12 months from date of receipt. |
| Predicted Protein Size: | 36 kDa |
| Gene Name: | undifferentiated embryonic cell transcription factor 1 |
| Database Link: | NP_003568 Entrez Gene 8433 Human Q5T230 |
| Background: | UTF1 acts as a transcriptional coactivator of ATF2. |
| Synonyms: | OTTHUMP00000020786; undifferentiated embryonic cell transcription factor 1 |
| Note: | Immunogen sequence homology: Human: 100%; Pig: 93%; Horse: 93%; Bovine: 93%; Rat: 86%; Mouse: 86%; Guinea pig: 79% |
| Protein Families: | Embryonic stem cells, ES Cell Differentiation/IPS, Induced pluripotent stem cells, Transcription Factors |



[View online »](#)

Product images:

WB Suggested Anti-UTF1 Antibody Titration: 0.2-1 ug/ml; ELISA Titer: 1:312500; Positive Control: Human Placenta



Immunohistochemistry with Testis tissue at an antibody concentration of 5ug/ml using anti-UTF1 antibody