

## Product datasheet for **TA329660**

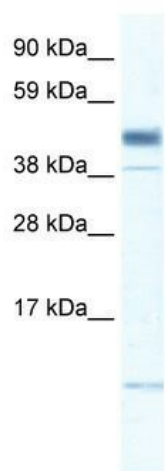
### ZMAT1 Rabbit Polyclonal Antibody

#### Product data:

Product Type:	Primary Antibodies
Applications:	WB
Recommended Dilution:	WB
Reactivity:	Human
Host:	Rabbit
Isotype:	IgG
Clonality:	Polyclonal
Immunogen:	The immunogen for anti-ZMAT1 antibody: synthetic peptide directed towards the middle region of human ZMAT1. Synthetic peptide located within the following region: EASQTYQRPYHISPVESQLPQWLPTHSKRTYDSFQDELEDYIKVQKARGL
Formulation:	Liquid. Purified antibody supplied in 1x PBS buffer with 0.09% (w/v) sodium azide and 2% sucrose.
Conjugation:	Unconjugated
Storage:	Store at -20°C as received.
Stability:	Stable for 12 months from date of receipt.
Predicted Protein Size:	51 kDa
Database Link:	<a href="#">NP_115817</a> <a href="#">Entrez Gene 84460 Human</a>
Background:	The function of ZMAT1 has not been determined
Synonyms:	KIAA1789; matrin type 1; MGC176597; MGC176728; OTTHUMP00000023703; zinc finger
Note:	Immunogen sequence homology: Horse: 100%; Human: 100%; Dog: 93%; Pig: 93%; Rat: 92%; Bovine: 92%; Rabbit: 92%; Guinea pig: 86%; Mouse: 79%



[View online »](#)

**Product images:**


WB Suggested Anti-ZMAT1 Antibody Titration:  
0.2-1 ug/ml; ELISA Titer: 1:312500; Positive  
Control: Human brain