

Product datasheet for **TA329659**

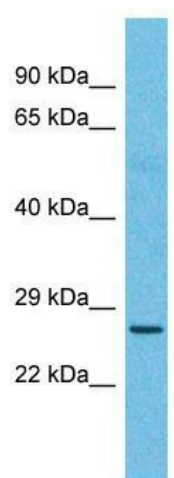
nkx6.2 (NKX6-2) Rabbit Polyclonal Antibody

Product data:

| | |
|-------------------------|---|
| Product Type: | Primary Antibodies |
| Applications: | WB |
| Recommended Dilution: | WB |
| Reactivity: | Human |
| Host: | Rabbit |
| Isotype: | IgG |
| Clonality: | Polyclonal |
| Immunogen: | The immunogen for Anti-NKX6-2 antibody is: synthetic peptide directed towards the N-terminal region of Human NKX6-2. Synthetic peptide located within the following region: PLAALHNMAEMKTSLFPYALQGPAGFKAPALGGLGAQLPLGTPHGSDIL |
| Formulation: | Liquid. Purified antibody supplied in 1x PBS buffer with 0.09% (w/v) sodium azide and 2% sucrose. <i>Note that this product is shipped as lyophilized powder to China customers.</i> |
| Purification: | Affinity Purified |
| Conjugation: | Unconjugated |
| Storage: | Store at -20°C as received. |
| Stability: | Stable for 12 months from date of receipt. |
| Predicted Protein Size: | 29 kDa |
| Gene Name: | NK6 homeobox 2 |
| Database Link: | NP_796374 Entrez Gene 84504 Human Q9C056 |
| Background: | The function of this protein remains unknown. |
| Synonyms: | GTX; NKX6.2; NKX6B |
| Note: | Immunogen sequence homology: Dog: 100%; Rat: 100%; Human: 100%; Pig: 93%; Guinea pig: 93%; Mouse: 86% |
| Protein Families: | Transcription Factors |



[View online »](#)

Product images:

Host: Rabbit; Target Name: NKX6-2; Sample Tissue: Esophagus Tumor lysates; Antibody Dilution: 1.0ug/ml