

Product datasheet for **TA329657**

FKLF / KLF11 (KLF11) Rabbit Polyclonal Antibody

Product data:

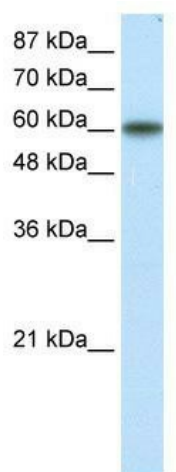
Product Type:	Primary Antibodies
Applications:	WB
Recommended Dilution:	WB
Reactivity:	Human
Host:	Rabbit
Isotype:	IgG
Clonality:	Polyclonal
Immunogen:	The immunogen for anti-KLF11 antibody: synthetic peptide directed towards the N terminal of human KLF11. Synthetic peptide located within the following region: SQKGDLLRIRLTPVSDSGDVTTTVHMDAATPELPKDFHSLSTLCITPPQ
Formulation:	Liquid. Purified antibody supplied in 1x PBS buffer with 0.09% (w/v) sodium azide and 2% sucrose. <i>Note that this product is shipped as lyophilized powder to China customers.</i>
Conjugation:	Unconjugated
Storage:	Store at -20°C as received.
Stability:	Stable for 12 months from date of receipt.
Predicted Protein Size:	55 kDa
Gene Name:	Kruppel-like factor 11
Database Link:	NP_003588 Entrez Gene 8462 Human O14901
Background:	KLF11 (TIEG2) is a pancreas-enriched transcription factor that has elicited significant attention because of its role as negative regulator of exocrine cell growth in vitro and in vivo. It plays a role in the regulation of pancreatic beta cell physiology, and its variants may contribute to the development of diabetes.
Synonyms:	FKLF; FKLF1; MODY7; TIEG2; Tieg3
Note:	Immunogen sequence homology: Human: 100%; Pig: 93%; Horse: 93%; Bovine: 93%; Dog: 92%; Rat: 90%; Guinea pig: 86%; Rabbit: 77%



[View online »](#)

Protein Families: Transcription Factors

Product images:



WB Suggested Anti-KLF11 Antibody Titration:
1.25ug/ml; ELISA Titer: 1:1562500; Positive
Control: Transfected 293T