

Product datasheet for **TA329656**

TEA domain family member 2 (TEAD2) Rabbit Polyclonal Antibody

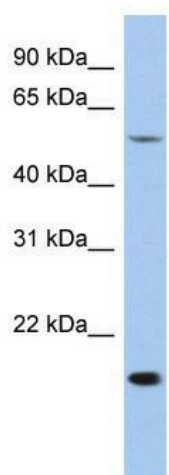
Product data:

Product Type:	Primary Antibodies
Applications:	WB
Recommended Dilution:	WB
Reactivity:	Human
Host:	Rabbit
Isotype:	IgG
Clonality:	Polyclonal
Immunogen:	The immunogen for anti-TEAD2 antibody: synthetic peptide directed towards the middle region of human TEAD2. Synthetic peptide located within the following region: SGGFYGVSSQYESLEHMTLTCSSKVCSEFGKQVVEKVETERAQLDGRFVY
Formulation:	Liquid. Purified antibody supplied in 1x PBS buffer with 0.09% (w/v) sodium azide and 2% sucrose. <i>Note that this product is shipped as lyophilized powder to China customers.</i>
Conjugation:	Unconjugated
Storage:	Store at -20°C as received.
Stability:	Stable for 12 months from date of receipt.
Predicted Protein Size:	49 kDa
Gene Name:	TEA domain transcription factor 2
Database Link:	NP_003589 Entrez Gene 8463 Human Q15562
Background:	TEAD2 is a putative transcription factor that binds to the SPH and GT-IIC enhansons (5'-GTGGAATGT-3'). TEAD2 may be involved in the gene regulation of neural development. TEAD2 binds to the M-CAT motif.
Synonyms:	ETF; TEAD-2; TEF-4; TEF4
Note:	Immunogen sequence homology: Dog: 100%; Pig: 100%; Rat: 100%; Horse: 100%; Human: 100%; Mouse: 100%; Bovine: 100%; Zebrafish: 100%; Guinea pig: 100%; Rabbit: 86%
Protein Families:	Transcription Factors



[View online »](#)

Product images:



WB Suggested Anti-TEAD2 Antibody Titration: 0.2-1 ug/ml; ELISA Titer: 1:12500; Positive Control: HT1080 cell lysate