

Product datasheet for TA329655

SPT3 (SUPT3H) Rabbit Polyclonal Antibody

Product data:

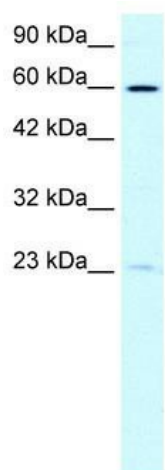
Product Type:	Primary Antibodies
Applications:	IHC, WB
Recommended Dilution:	WB, IHC
Reactivity:	Human
Host:	Rabbit
Isotype:	IgG
Clonality:	Polyclonal
Immunogen:	The immunogen for anti-SUPT3H antibody: synthetic peptide directed towards the N terminal of human SUPT3H. Synthetic peptide located within the following region: MRKDKKKLRLLKYMFIREDYKSKIVKGIEDDLLEDKLSGSNNANKRQKI
Formulation:	Liquid. Purified antibody supplied in 1x PBS buffer with 0.09% (w/v) sodium azide and 2% sucrose. <i>Note that this product is shipped as lyophilized powder to China customers.</i>
Conjugation:	Unconjugated
Storage:	Store at -20°C as received.
Stability:	Stable for 12 months from date of receipt.
Predicted Protein Size:	36 kDa
Gene Name:	SPT3 homolog, SAGA and STAGA complex component
Database Link:	NP_003590 Entrez Gene 8464 Human O75486
Background:	SUPT3H is a component of the multiprotein SPT-ADA-GCN5 acetyltransferase (SAGA) complex that integrates proteins with transcription coactivator/adaptor functions (ADAs and GCN5), histone acetyltransferase activity (GCN5), and core promoter-selective functions (SPTs) involving interactions with the TATA-binding protein (TBP).
Synonyms:	SPT3; SPT3L
Note:	Immunogen sequence homology: Dog: 100%; Pig: 100%; Goat: 100%; Horse: 100%; Human: 100%; Bovine: 100%; Rat: 93%; Mouse: 93%; Rabbit: 86%; Guinea pig: 86%



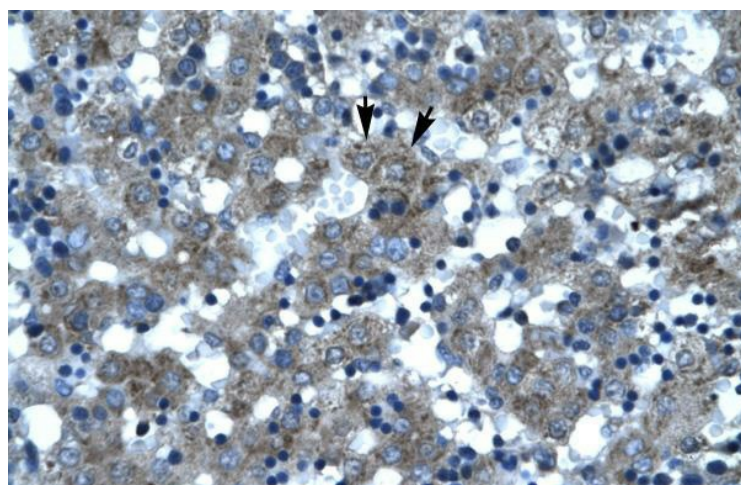
[View online »](#)

Protein Families: Stem cell - Pluripotency, Transcription Factors

Product images:



WB Suggested Anti-SUPT3H Antibody Titration: 0.4ug/ml; ELISA Titer: 1:1562500; Positive Control: HepG2 cell lysate. SUPT3H is supported by BioGPS gene expression data to be expressed in HepG2



Rabbit Anti-SUPT3H Antibody; Paraffin Embedded Tissue: Human Liver; Cellular Data: Hepatocytes; Antibody Concentration: 4.0-8.0 ug/ml; Magnification: 400X