

Product datasheet for **TA329654**

GLIS2 Rabbit Polyclonal Antibody

Product data:

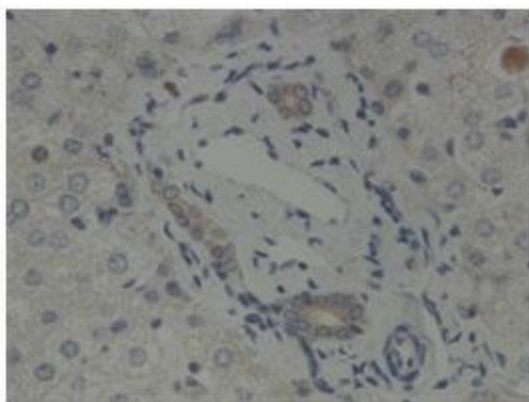
Product Type:	Primary Antibodies
Applications:	IHC, WB
Recommended Dilution:	WB, IHC
Reactivity:	Human
Host:	Rabbit
Isotype:	IgG
Clonality:	Polyclonal
Immunogen:	The immunogen for anti-GLIS2 antibody: synthetic peptide directed towards the N terminal of human GLIS2. Synthetic peptide located within the following region: QDLVDHVNDYHVKPEKDAGYCCHWEGCARHGRGFNARYKMLIHIRTHTNE
Formulation:	Liquid. Purified antibody supplied in 1x PBS buffer with 0.09% (w/v) sodium azide and 2% sucrose. <i>Note that this product is shipped as lyophilized powder to China customers.</i>
Conjugation:	Unconjugated
Storage:	Store at -20°C as received.
Stability:	Stable for 12 months from date of receipt.
Predicted Protein Size:	56 kDa
Gene Name:	GLIS family zinc finger 2
Database Link:	NP_115964 Entrez Gene 84662 Human Q9BZE0
Background:	Members of the Kruppel-like zinc finger protein family, such as GLIS2, function as activators and/or repressors of gene transcription.
Synonyms:	NKL; NPHP7
Note:	Immunogen sequence homology: Dog: 100%; Pig: 100%; Rat: 100%; Horse: 100%; Human: 100%; Bovine: 100%; Guinea pig: 100%; Rabbit: 93%; Zebrafish: 93%; Mouse: 86%
Protein Families:	ES Cell Differentiation/IPS



[View online »](#)

Product images:

WB Suggested Anti-GLIS2 Antibody Titration: 0.2-1 ug/ml; ELISA Titer: 1:312500; Positive Control: HepG2 cell lysate



Sample Type: Human Bile Duct Primary; Dilution: 1:500