

## Product datasheet for **TA329652**

### HES7 Rabbit Polyclonal Antibody

#### Product data:

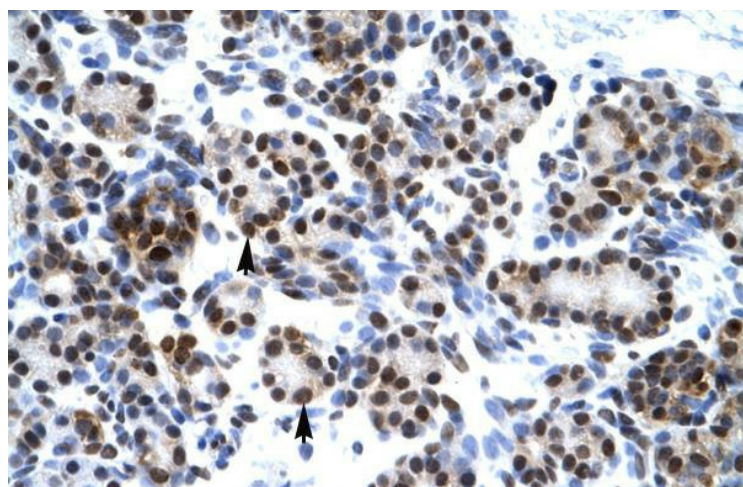
Product Type:	Primary Antibodies
Applications:	IHC, WB
Recommended Dilution:	WB, IHC
Reactivity:	Human
Host:	Rabbit
Isotype:	IgG
Clonality:	Polyclonal
Immunogen:	The immunogen for anti-HES7 antibody: synthetic peptide directed towards the middle region of human HES7. Synthetic peptide located within the following region: VGYLRERSRVEPPGVPRSPVQDAKALASCYLSGFRECLLRLLAAIAHDASP
Formulation:	Liquid. Purified antibody supplied in 1x PBS buffer with 0.09% (w/v) sodium azide and 2% sucrose. <i>Note that this product is shipped as lyophilized powder to China customers.</i>
Conjugation:	Unconjugated
Storage:	Store at -20°C as received.
Stability:	Stable for 12 months from date of receipt.
Predicted Protein Size:	25 kDa
Gene Name:	hes family bHLH transcription factor 7
Database Link:	<a href="#">NP_115969</a> <a href="#">Entrez Gene 84667 Human</a> <a href="#">Q9BYE0</a>
Background:	In mouse, Hes7 expression is associated with somitogenesis and is controlled by Notch signaling.
Synonyms:	bHLHb37; SCDO4
Note:	Immunogen sequence homology: Human: 100%; Dog: 92%; Pig: 92%; Rat: 92%; Horse: 92%; Mouse: 92%; Bovine: 92%; Rabbit: 92%; Guinea pig: 92%



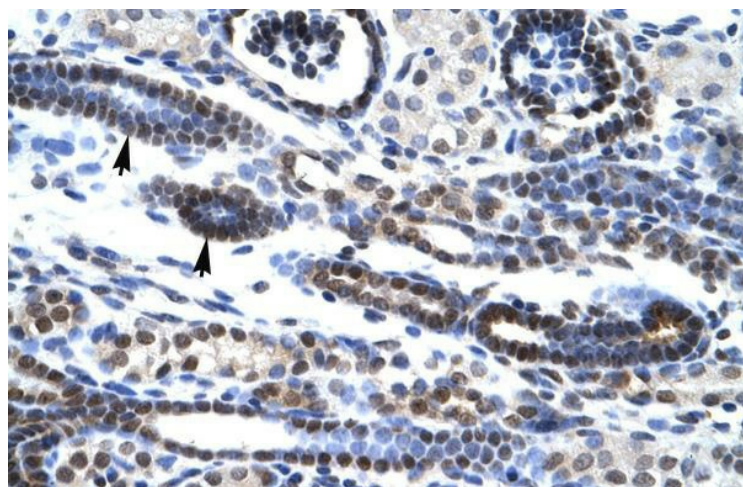
[View online »](#)

**Product images:**

WB Suggested Anti-HES7 Antibody Titration: 0.2-1 ug/ml; ELISA Titer: 1:312500; Positive Control: Human heart



Rabbit Anti-HES7 Antibody; Paraffin Embedded Tissue: Human Pancreas; Cellular Data: Epithelial cells of pancreatic acinus; Antibody Concentration: 4.0-8.0 ug/ml; Magnification: 400X



Rabbit Anti-HES7 Antibody; Paraffin Embedded Tissue: Human Kidney; Cellular Data: Epithelial cells of renal tubule; Antibody Concentration: 4.0-8.0 ug/ml; Magnification: 400X