

## Product datasheet for **TA329651**

### SNF2H (SMARCA5) Rabbit Polyclonal Antibody

#### Product data:

|                         |  |
|-------------------------|--|
| Product Type:           | Primary Antibodies   |
| Applications:           | WB   |
| Recommended Dilution:   | WB, ChIP   |
| Reactivity:             | Human  |
| Host:                   | Rabbit   |
| Isotype:                | IgG  |
| Clonality:              | Polyclonal   |
| Immunogen:              | The immunogen for anti-SMARCA5 antibody: synthetic peptide directed towards the N terminal of human SMARCA5. Synthetic peptide located within the following region: AGPADAEMEEIFDDASPGKQKEIQEPDPTYEEKMQTDRANRFEYLLKQTE |
| Formulation:            | Liquid. Purified antibody supplied in 1x PBS buffer with 0.09% (w/v) sodium azide and 2% sucrose.<br><i>Note that this product is shipped as lyophilized powder to China customers.</i>                                |
| Conjugation:            | Unconjugated   |
| Storage:                | Store at -20°C as received.  |
| Stability:              | Stable for 12 months from date of receipt.   |
| Predicted Protein Size: | 122 kDa  |
| Gene Name:              | SWI/SNF related, matrix associated, actin dependent regulator of chromatin, subfamily a, member 5  |
| Database Link:          | <a href="#">NP_003592</a><br><a href="#">Entrez Gene 8467 Human</a><br><a href="#">O60264</a>  |



[View online »](#)

**Background:**

SMARCA5 is a member of the SWI/SNF family of proteins. Members of this family have helicase and ATPase activities and are thought to regulate transcription of certain genes by altering the chromatin structure around those genes. SMARCA5 is a component of the chromatin remodeling and spacing factor RSF, a facilitator of the transcription of class II genes by RNA polymerase II. The protein encoded by this gene is a member of the SWI/SNF family of proteins. Members of this family have helicase and ATPase activities and are thought to regulate transcription of certain genes by altering the chromatin structure around those genes. The protein encoded by this gene is a component of the chromatin remodeling and spacing factor RSF, a facilitator of the transcription of class II genes by RNA polymerase II. The encoded protein is similar in sequence to the Drosophila ISWI chromatin remodeling protein. Publication Note: This RefSeq record includes a subset of the publications that are available for this gene. Please see the Entrez Gene record to access additional publications.

**Synonyms:**

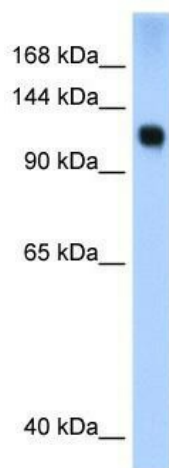
hISWI; hSNF2H; ISWI; SNF2H; WCRF135

**Note:**

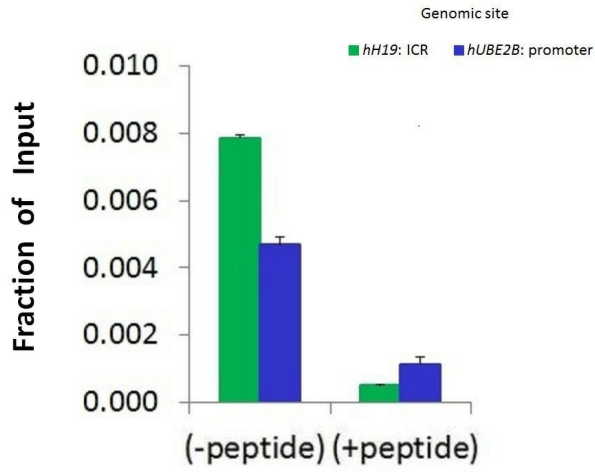
Immunogen sequence homology: Dog: 100%; Pig: 100%; Rat: 100%; Horse: 100%; Human: 100%; Mouse: 100%; Bovine: 100%; Guinea pig: 100%

**Protein Families:**

Transcription Factors

**Product images:**

WB Suggested Anti-SMARCA5 Antibody Titration:  
0.2-1 ug/ml; ELISA Titer: 1:312500; Positive  
Control: Transfected 293T



Chromatin Immunoprecipitation (ChIP) Using SMARCA5 antibody - N-terminal region and HCT116 Cells