

Product datasheet for **TA329649**

ZNF496 Rabbit Polyclonal Antibody

Product data:

Product Type:	Primary Antibodies
Applications:	WB
Recommended Dilution:	WB
Reactivity:	Human
Host:	Rabbit
Isotype:	IgG
Clonality:	Polyclonal
Immunogen:	The immunogen for anti-ZNF496 antibody: synthetic peptide directed towards the middle region of human ZNF496. Synthetic peptide located within the following region: QEKPHCESVCGELFSDSEDLDGHLESHEAQKPYRCGACGKSFRLNSHLLS
Formulation:	Liquid. Purified antibody supplied in 1x PBS buffer with 0.09% (w/v) sodium azide and 2% sucrose. <i>Note that this product is shipped as lyophilized powder to China customers.</i>
Conjugation:	Unconjugated
Storage:	Store at -20°C as received.
Stability:	Stable for 12 months from date of receipt.
Predicted Protein Size:	67 kDa
Gene Name:	zinc finger protein 496
Database Link:	NP_116141 Entrez Gene 84838 Human Q96IT1
Background:	ZNF496 contains a SCAN box, a KRAB-A domain, and four consensus C2H2-type zinc fingers preceded by a unique finger derivative, referred to herein as the C2HR motif. The C2HR motif functions to mediate protein-protein interaction with the cysteine-rich (C5HCH) domain of NSD1 in a Zn(II)-dependent fashion, and when tethered to RNA polymerase II promoters, represses transcription in an NSD1-dependent manner. ZNF496 contains a novel type of zinc finger motif that functions as a docking site for NSD1 and is more than just a degenerate evolutionary remnant of a C2H2 motif.



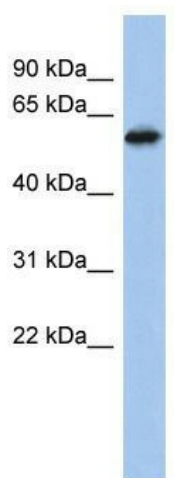
[View online »](#)

Synonyms: NIZP1; ZFP496; ZKSCAN17; ZSCAN49

Note: Immunogen sequence homology: Human: 100%; Dog: 93%; Pig: 93%; Rat: 93%; Mouse: 93%; Rabbit: 93%; Horse: 86%; Sheep: 86%; Bovine: 86%

Protein Families: Transcription Factors

Product images:



WB Suggested Anti-ZNF496 Antibody Titration:
0.2-1 ug/ml; ELISA Titer: 1:12500; Positive Control:
PANC1 cell lysate