

Product datasheet for **TA329647**

MINA53 (MINA) Rabbit Polyclonal Antibody

Product data:

Product Type:	Primary Antibodies
Applications:	WB
Recommended Dilution:	WB
Reactivity:	Human
Host:	Rabbit
Isotype:	IgG
Clonality:	Polyclonal
Immunogen:	The immunogen for anti-MINA antibody: synthetic peptide directed towards the N terminal of human MINA. Synthetic peptide located within the following region: NGKKKVLNKDGAHFLQLRKDFDQKRATIQFHQPQRFKDELWRIQEKLEC
Formulation:	Liquid. Purified antibody supplied in 1x PBS buffer with 0.09% (w/v) sodium azide and 2% sucrose. <i>Note that this product is shipped as lyophilized powder to China customers.</i>
Conjugation:	Unconjugated
Storage:	Store at -20°C as received.
Stability:	Stable for 12 months from date of receipt.
Predicted Protein Size:	53 kDa
Gene Name:	MYC induced nuclear antigen
Database Link:	NP_694822 Entrez Gene 84864 Human Q8IUJ8
Background:	MINA protein is directly involved in ribosome biogenesis, most likely during the assembly process of preribosomal particles. MINA is also involved in cell proliferation. MINA may have a role in esophageal squamous cell carcinoma, colon cancer and lung cancer. MINA is a c-Myc (MYC; MIM 190080) target gene that may play a role in cell proliferation or regulation of cell growth. (Tsuneoka et al., 2002 [PubMed 12091391]; Zhang et al., 2005 [PubMed 15897898]). [supplied by OMIM]
Synonyms:	MDIG; MINA53; NO52; ROX

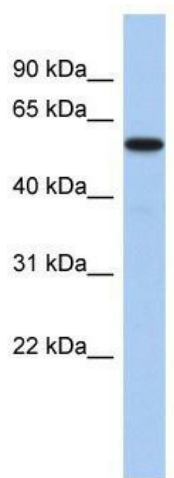


[View online »](#)

Note: Immunogen sequence homology: Human: 100%; Rabbit: 100%; Pig: 93%; Rat: 93%; Horse: 93%; Mouse: 93%; Guinea pig: 93%; Bovine: 86%; Dog: 79%

Protein Families: Druggable Genome

Product images:



WB Suggested Anti-MINA Antibody Titration: 0.2-1 ug/ml; ELISA Titer: 1:62500; Positive Control: Human Liver