

Product datasheet for **TA329646**

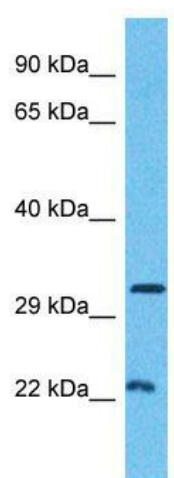
MINA53 (MINA) Rabbit Polyclonal Antibody

Product data:

Product Type:	Primary Antibodies
Applications:	WB
Recommended Dilution:	WB
Reactivity:	Human
Host:	Rabbit
Isotype:	IgG
Clonality:	Polyclonal
Immunogen:	The immunogen for Anti-MINA antibody is: synthetic peptide directed towards the C-terminal region of Human MINA. Synthetic peptide located within the following region: LTVLPDQDQSDEAQEKMVYIYHSLKNSRETHMMGNEEETEFHGLRFPLSH
Formulation:	Liquid. Purified antibody supplied in 1x PBS buffer with 0.09% (w/v) sodium azide and 2% sucrose. <i>Note that this product is shipped as lyophilized powder to China customers.</i>
Purification:	Affinity Purified
Conjugation:	Unconjugated
Storage:	Store at -20°C as received.
Stability:	Stable for 12 months from date of receipt.
Predicted Protein Size:	23 kDa
Gene Name:	MYC induced nuclear antigen
Database Link:	NP_694822 Entrez Gene 84864 Human Q8IUJ8
Background:	MINA is a c-Myc target gene that may play a role in cell proliferation or regulation of cell growth.
Synonyms:	MDIG; MINA53; NO52; ROX
Note:	Immunogen sequence homology: Human: 100%; Rabbit: 93%; Rat: 86%; Dog: 79%; Pig: 79%
Protein Families:	Druggable Genome



[View online »](#)

Product images:

Host: Rabbit; Target Name: MINA; Sample Tissue: Breast Tumor lysates; Antibody Dilution: 1.0ug/ml