

## Product datasheet for **TA329644**

### ZNF499 (ZBTB45) Rabbit Polyclonal Antibody

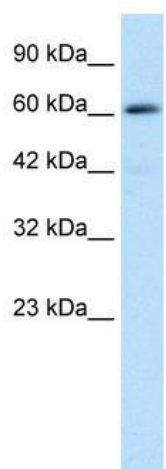
#### Product data:

Product Type:	Primary Antibodies
Applications:	IHC, WB
Recommended Dilution:	WB, IHC
Reactivity:	Human
Host:	Rabbit
Isotype:	IgG
Clonality:	Polyclonal
Immunogen:	The immunogen for anti-ZNF499 antibody: synthetic peptide directed towards the middle region of human ZNF499. Synthetic peptide located within the following region: SAAPDDRGDEDDEESDDETDGEDGEGGGPGEGQAPPSFPDCAAGFLTAA
Formulation:	Liquid. Purified antibody supplied in 1x PBS buffer with 0.09% (w/v) sodium azide and 2% sucrose. <i>Note that this product is shipped as lyophilized powder to China customers.</i>
Conjugation:	Unconjugated
Storage:	Store at -20°C as received.
Stability:	Stable for 12 months from date of receipt.
Predicted Protein Size:	54 kDa
Gene Name:	zinc finger and BTB domain containing 45
Database Link:	<a href="#">NP_116181</a> <a href="#">Entrez Gene 84878 Human</a> <a href="#">Q96K62</a>
Background:	ZNF499 is located on chromosome 19.
Synonyms:	ZNF499
Note:	Immunogen sequence homology: Dog: 100%; Human: 100%; Rabbit: 93%; Rat: 86%; Mouse: 80%
Protein Families:	Transcription Factors

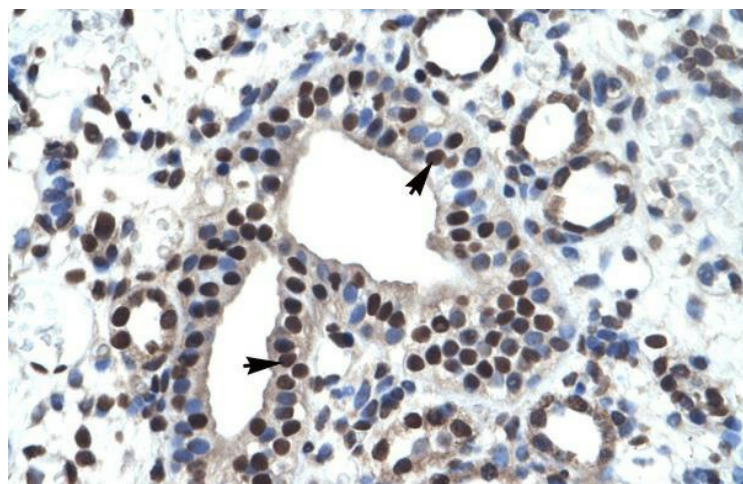


[View online »](#)

## Product images:



WB Suggested Anti-ZNF499 Antibody Titration:  
0.06ug/ml; ELISA Titer: 1:62500; Positive Control:  
Jurkat cell lysate



Rabbit Anti-ZNF499 Antibody; Paraffin Embedded  
Tissue: Human Kidney; Cellular Data: Epithelial  
cells of collecting tubule; Antibody Concentration:  
4.0-8.0 ug/ml; Magnification: 400X