

## Product datasheet for **TA329643**

### ZNF341 Rabbit Polyclonal Antibody

#### Product data:

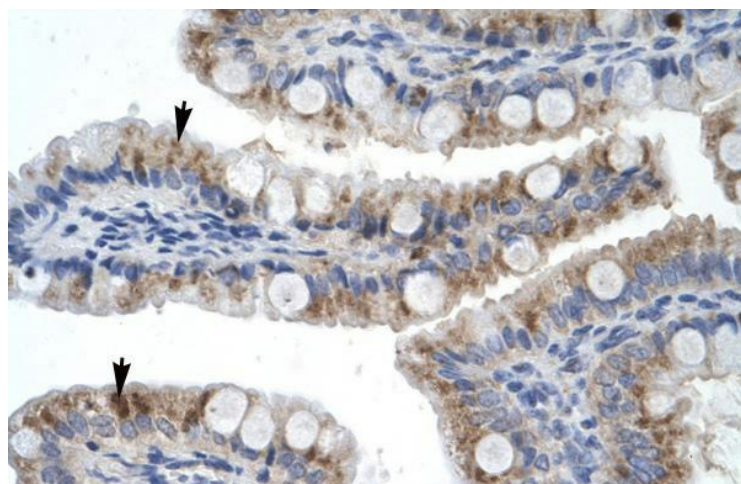
Product Type:	Primary Antibodies
Applications:	IHC, WB
Recommended Dilution:	WB, IHC
Reactivity:	Human
Host:	Rabbit
Isotype:	IgG
Clonality:	Polyclonal
Immunogen:	The immunogen for anti-ZNF341 antibody: synthetic peptide directed towards the middle region of human ZNF341. Synthetic peptide located within the following region: GEEEGDKPESKQVVLIDSSYLCQFCPSKFSTYFQLKSHMTQHKNEQVYKC
Formulation:	Liquid. Purified antibody supplied in 1x PBS buffer with 0.09% (w/v) sodium azide and 2% sucrose. <i>Note that this product is shipped as lyophilized powder to China customers.</i>
Conjugation:	Unconjugated
Storage:	Store at -20°C as received.
Stability:	Stable for 12 months from date of receipt.
Predicted Protein Size:	92 kDa
Gene Name:	zinc finger protein 341
Database Link:	<a href="#">NP_116208</a> <a href="#">Entrez Gene 84905 Human</a> <a href="#">Q9BYN7</a>
Background:	The ZNF341 gene is located on chromosome 20.
Synonyms:	OTTHUMP00000030667; OTTHUMP00000030670; zinc finger protein 341
Note:	Immunogen sequence homology: Human: 100%; Mouse: 93%; Dog: 86%; Pig: 86%; Bovine: 86%; Rabbit: 86%; Guinea pig: 86%; Horse: 79%
Protein Families:	Transcription Factors



[View online »](#)

**Product images:**

WB Suggested Anti-ZNF341 Antibody Titration:  
0.2-1 ug/ml; ELISA Titer: 1:312500; Positive  
Control: HepG2 cell lysate



Rabbit Anti-ZNF341 Antibody; Paraffin Embedded  
Tissue: Human Intestine; Cellular Data: Epithelial  
cells of intestinal villas; Antibody Concentration:  
4.0-8.0 ug/ml; Magnification: 400X