

## Product datasheet for **TA329641**

### FIZ1 Rabbit Polyclonal Antibody

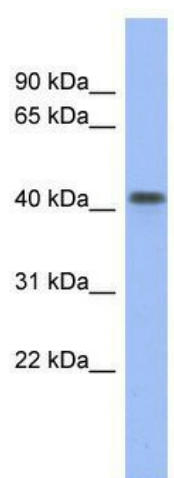
#### Product data:

Product Type:	Primary Antibodies
Applications:	WB
Recommended Dilution:	WB
Reactivity:	Human
Host:	Rabbit
Isotype:	IgG
Clonality:	Polyclonal
Immunogen:	The immunogen for anti-FIZ1 antibody: synthetic peptide directed towards the middle region of human FIZ1. Synthetic peptide located within the following region: LAAHWAAHTDVKPFKPCRDFNAPALLERHKLTHDLQGPAPPAQAWA
Formulation:	Liquid. Purified antibody supplied in 1x PBS buffer with 0.09% (w/v) sodium azide and 2% sucrose.
Conjugation:	Unconjugated
Storage:	Store at -20°C as received.
Stability:	Stable for 12 months from date of receipt.
Predicted Protein Size:	52 kDa
Gene Name:	FLT3 interacting zinc finger 1
Database Link:	<a href="#">NP_116225</a> <a href="#">Entrez Gene 84922 Human</a> <a href="#">Q96SL8</a>
Background:	FIZ1 is zinc finger protein, which interacts with a receptor tyrosine kinase involved in the regulation of hematopoietic and lymphoid cells. FIZ1 also interacts with a transcription factor that regulates the expression of rod-specific genes in retina.
Synonyms:	ZNF798
Note:	Immunogen sequence homology: Pig: 100%; Human: 100%; Bovine: 100%; Dog: 86%; Rat: 79%; Mouse: 79%



[View online »](#)

## Product images:



WB Suggested Anti-FIZ1 Antibody Titration: 0.2-1 ug/ml; ELISA Titer: 1:312500; Positive Control: Human Small Intestine