

Product datasheet for **TA329640**

FIZ1 Rabbit Polyclonal Antibody

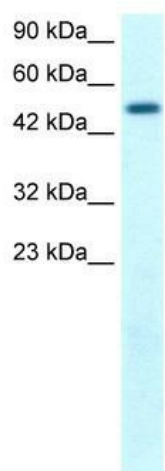
Product data:

Product Type:	Primary Antibodies
Applications:	IHC, WB
Recommended Dilution:	WB, IHC
Reactivity:	Human
Host:	Rabbit
Isotype:	IgG
Clonality:	Polyclonal
Immunogen:	The immunogen for anti-FLJ14768 antibody: synthetic peptide directed towards the C terminal of human FLJ14768. Synthetic peptide located within the following region: HCGALYAALAALEEHRRVSHGEGGGEEAAAAAREREPASGEPPSGSGRGK
Formulation:	Liquid. Purified antibody supplied in 1x PBS buffer with 0.09% (w/v) sodium azide and 2% sucrose. <i>Note that this product is shipped as lyophilized powder to China customers.</i>
Conjugation:	Unconjugated
Storage:	Store at -20°C as received.
Stability:	Stable for 12 months from date of receipt.
Predicted Protein Size:	52 kDa
Gene Name:	FLT3 interacting zinc finger 1
Database Link:	NP_116225 Entrez Gene 84922 Human Q96SL8
Background:	FLJ14768 is homologous to mouse and bovine Fiz1 (flt-3 interacting zinc finger). It interacts with NRL (neural retina leucine zipper). Possible role for Fiz1 as a transcriptional repressor.
Synonyms:	ZNF798
Note:	Immunogen sequence homology: Human: 100%; Dog: 86%; Pig: 83%; Horse: 79%

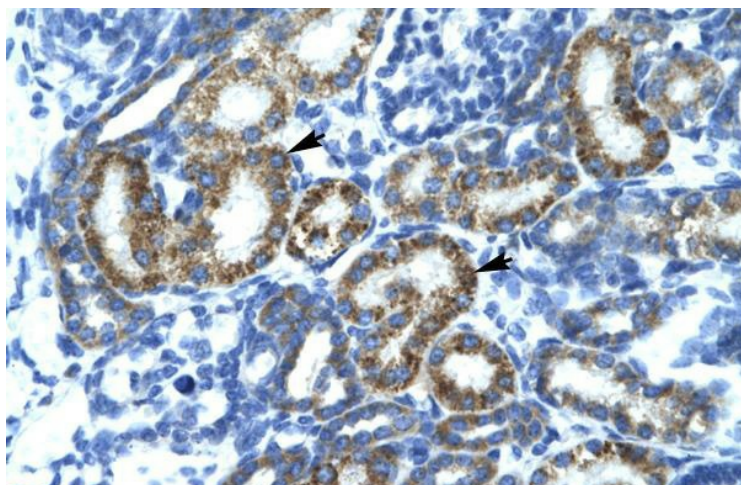


[View online »](#)

Product images:



WB Suggested Anti-FLJ14768 Antibody Titration: 1.25ug/ml; ELISA Titer: 1:62500; Positive Control: Human Kidney



Rabbit Anti-FLJ14768 Antibody; Paraffin Embedded Tissue: Human Kidney; Cellular Data: Epithelial cells of renal tubule; Antibody Concentration: 4.0-8.0 ug/ml; Magnification: 400X