

Product datasheet for **TA329639**

TOX2 Rabbit Polyclonal Antibody

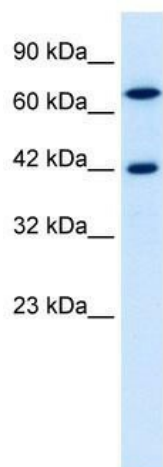
Product data:

Product Type:	Primary Antibodies
Applications:	IHC, WB
Recommended Dilution:	WB, IHC
Reactivity:	Human
Host:	Rabbit
Isotype:	IgG
Clonality:	Polyclonal
Immunogen:	The immunogen for anti-C20ORF100 antibody: synthetic peptide directed towards the N terminal of human C20ORF100. Synthetic peptide located within the following region: TSQTYNGQSENEDYEIPPITPPNLPEPSLLHLGDHEASYHSLCHGLTPN
Formulation:	Liquid. Purified antibody supplied in 1x PBS buffer with 0.09% (w/v) sodium azide and 2% sucrose. <i>Note that this product is shipped as lyophilized powder to China customers.</i>
Conjugation:	Unconjugated
Storage:	Store at -20°C as received.
Stability:	Stable for 12 months from date of receipt.
Predicted Protein Size:	49 kDa
Gene Name:	TOX high mobility group box family member 2
Database Link:	NP_116272 Entrez Gene 84969 Human Q96NM4
Background:	This gene, which is located on chromosome 20, is predicted to encode for a signal protein with unknown function.
Synonyms:	C20orf100; dj495O3.1; dj1108D11.2; GCX-1; GCX1
Note:	Immunogen sequence homology: Dog: 100%; Pig: 100%; Rat: 100%; Horse: 100%; Human: 100%; Mouse: 100%; Rabbit: 93%; Guinea pig: 93%
Protein Families:	Transcription Factors

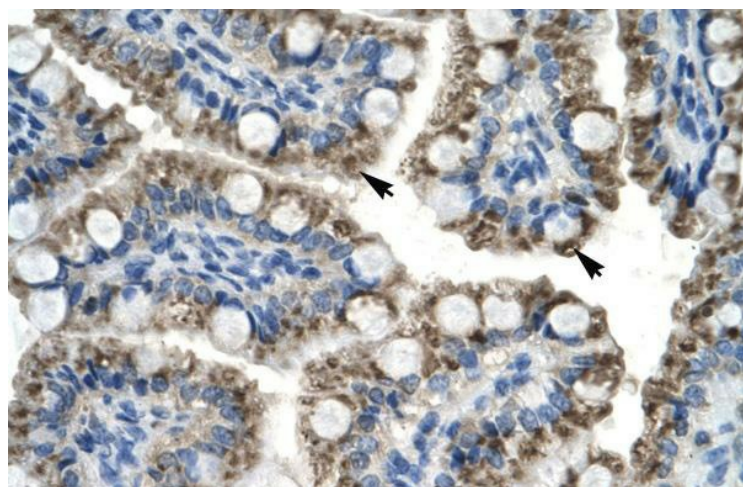


[View online »](#)

Product images:



WB Suggested Anti-C20ORF100 Antibody
Titration: 0.2-1 ug/ml; ELISA Titer: 1:312500;
Positive Control: Jurkat cell lysate



Rabbit Anti-C20orf100 Antibody; Paraffin
Embedded Tissue: Human Intestine; Cellular
Data: Epithelial cells of intestinal villas; Antibody
Concentration: 4.0-8.0 ug/ml; Magnification: 400X