

## Product datasheet for **TA329638**

### Growth Arrest Specific Protein 7 (GAS7) Rabbit Polyclonal Antibody

#### Product data:

Product Type:	Primary Antibodies
Applications:	IHC, WB
Recommended Dilution:	WB, IHC
Reactivity:	Human
Host:	Rabbit
Isotype:	IgG
Clonality:	Polyclonal
Immunogen:	The immunogen for anti-GAS7 antibody: synthetic peptide directed towards the N terminal of human GAS7. Synthetic peptide located within the following region: PGSHRSSLPPTVNGYHASGTPAHPETAHMSVRKSTGDSQNLGSSSSPSKK
Formulation:	Liquid. Purified antibody supplied in 1x PBS buffer with 0.09% (w/v) sodium azide and 2% sucrose. <i>Note that this product is shipped as lyophilized powder to China customers.</i>
Conjugation:	Unconjugated
Storage:	Store at -20°C as received.
Stability:	Stable for 12 months from date of receipt.
Predicted Protein Size:	54 kDa
Gene Name:	growth arrest specific 7
Database Link:	<a href="#">NP_958836</a> <a href="#">Entrez Gene 8522 Human</a> <a href="#">O60861</a>
Background:	The growth arrest-specific 7 (GAS7) gene is expressed primarily in terminally differentiated brain cells and predominantly in mature cerebellar Purkinje neurons. GAS7 plays a putative role in neuronal development.
Synonyms:	GAS7; MLL
Note:	Immunogen sequence homology: Dog: 100%; Pig: 100%; Rat: 100%; Horse: 100%; Human: 100%; Bovine: 100%; Rabbit: 100%; Guinea pig: 100%; Mouse: 93%
Protein Families:	Transcription Factors

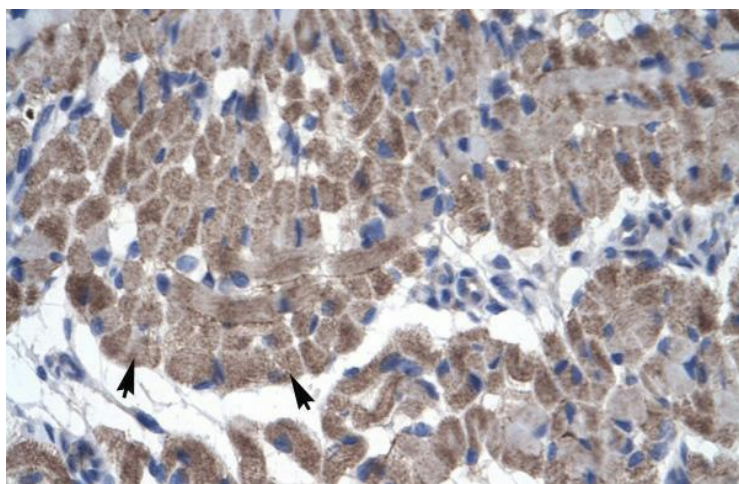


[View online »](#)

## Product images:



WB Suggested Anti-GAS7 Antibody Titration:  
5.0ug/ml; ELISA Titer: 1:62500; Positive Control:  
Human cerebellum



Rabbit Anti-GAS7 Antibody; Paraffin Embedded  
Tissue: Human Muscle; Cellular Data: Skeletal  
muscle cells; Antibody Concentration: 4.0-8.0  
ug/ml; Magnification: 400X