

Product datasheet for **TA329637**

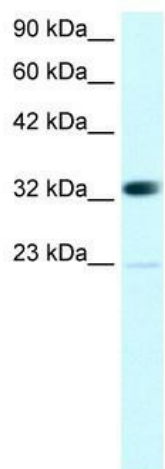
CBX4 Rabbit Polyclonal Antibody

Product data:

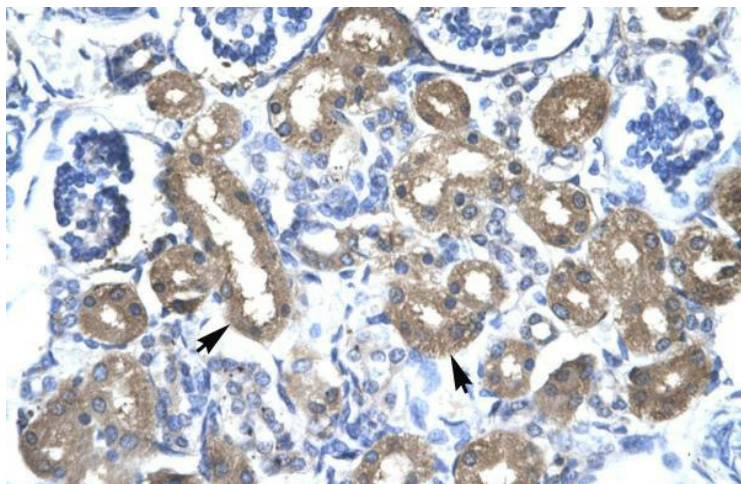
Product Type:	Primary Antibodies
Applications:	IHC, WB
Recommended Dilution:	WB, IHC
Reactivity:	Human
Host:	Rabbit
Isotype:	IgG
Clonality:	Polyclonal
Immunogen:	The immunogen for anti-CBX4 antibody: synthetic peptide directed towards the N terminal of human CBX4. Synthetic peptide located within the following region: LLIAFQNRERQEQLMGYRKRGPKPPLVVQVPTFARRSNVLTGLQDSSTD
Formulation:	Liquid. Purified antibody supplied in 1x PBS buffer with 0.09% (w/v) sodium azide and 2% sucrose. <i>Note that this product is shipped as lyophilized powder to China customers.</i>
Conjugation:	Unconjugated
Storage:	Store at -20°C as received.
Stability:	Stable for 12 months from date of receipt.
Predicted Protein Size:	61 kDa
Gene Name:	chromobox 4
Database Link:	NP_003646 Entrez Gene 8535 Human O00257
Background:	The polycomb group (PcG) protein HPC2, which functions as a transcriptional suppressor, is a candidate of KyoT2-binding proteins. Pc2 dramatically enhances CtBP sumoylation. Pc2 is a SUMO E3, and Polycomb Group bodies may be sumoylation centers.
Synonyms:	NBP16; PC2
Note:	Immunogen sequence homology: Dog: 100%; Pig: 100%; Rat: 100%; Human: 100%; Mouse: 100%; Bovine: 100%; Rabbit: 100%; Guinea pig: 100%; Zebrafish: 77%
Protein Families:	Druggable Genome, Transcription Factors



[View online »](#)

Product images:

WB Suggested Anti-CBX4 Antibody Titration: 0.2-1 ug/ml; ELISA Titer: 1:1562500; Positive Control: Jurkat cell lysate. CBX4 is supported by BioGPS gene expression data to be expressed in Jurkat



Rabbit Anti-CBX 4 Antibody; Paraffin Embedded Tissue: Human Kidney; Cellular Data: Epithelial cells of renal tubule; Antibody Concentration: 4.0-8.0 ug/ml; Magnification: 400X