

Product datasheet for **TA329633**

Gtf2h3 Rabbit Polyclonal Antibody

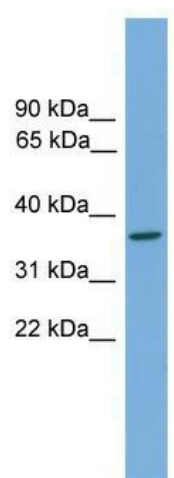
Product data:

Product Type:	Primary Antibodies
Applications:	WB
Recommended Dilution:	WB
Reactivity:	Mouse
Host:	Rabbit
Isotype:	IgG
Clonality:	Polyclonal
Immunogen:	The immunogen for anti-Gtf2h3 antibody: synthetic peptide corresponding to a region of Mouse. Synthetic peptide located within the following region: YPGKNGGLGDFFGDPGNALPDCNPSGSKDGKYELLTVANEVIAEEIKDLM
Formulation:	Liquid. Purified antibody supplied in 1x PBS buffer with 0.09% (w/v) sodium azide and 2% sucrose. <i>Note that this product is shipped as lyophilized powder to China customers.</i>
Conjugation:	Unconjugated
Storage:	Store at -20°C as received.
Stability:	Stable for 12 months from date of receipt.
Predicted Protein Size:	34 kDa
Gene Name:	general transcription factor IIH, polypeptide 3
Database Link:	NP_852075 Entrez Gene 209357 Mouse Q8VD76
Background:	Gtf2h3 is a component of the core-TFIH basal transcription factor involved in nucleotide excision repair (NER) of DNA and, when complexed to CAK, in RNA transcription by RNA polymerase II. Gtf2h3 anchors XPB.
Synonyms:	BTF2; BTF2-p34; TFB4; TFIH
Note:	Immunogen sequence homology: Pig: 100%; Rat: 100%; Horse: 100%; Human: 100%; Mouse: 100%; Bovine: 100%; Rabbit: 100%; Guinea pig: 100%



[View online »](#)

Product images:



WB Suggested Anti-Gtf2h3 Antibody Titration:
0.2-1 ug/ml; ELISA Titer: 1:312500; Positive
Control: Mouse Spleen