

## Product datasheet for **TA329632**

### Foxn2 Rabbit Polyclonal Antibody

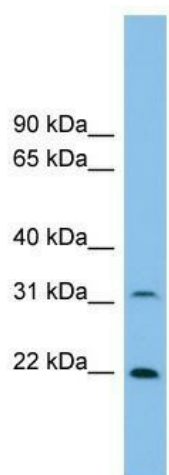
#### Product data:

Product Type:	Primary Antibodies
Applications:	WB
Recommended Dilution:	WB
Reactivity:	Mouse
Host:	Rabbit
Isotype:	IgG
Clonality:	Polyclonal
Immunogen:	The immunogen for anti-Foxn2 antibody: synthetic peptide directed towards the n terminal of mouse Foxn2. Synthetic peptide located within the following region: KRAETPGAEEKVAGLSQIYKMGS LPEAGDAARPKATLVGSESADDEL TNLN
Formulation:	Liquid. Purified antibody supplied in 1x PBS buffer with 0.09% (w/v) sodium azide and 2% sucrose. <i>Note that this product is shipped as lyophilized powder to China customers.</i>
Conjugation:	Unconjugated
Storage:	Store at -20°C as received.
Stability:	Stable for 12 months from date of receipt.
Predicted Protein Size:	23 kDa
Gene Name:	forkhead box N2
Database Link:	<a href="#">NP_851305</a> <a href="#">Entrez Gene 14236 Mouse</a>
Background:	The function of this protein remains unknown.
Synonyms:	HTLF
Note:	Immunogen sequence homology: Pig: 100%; Rat: 100%; Mouse: 100%; Guinea pig: 100%; Dog: 93%; Horse: 93%; Human: 93%; Rabbit: 93%; Bovine: 86%



[View online »](#)

## Product images:



WB Suggested Anti-Foxn2 Antibody Titration:  
0.0625 ug/ml; ELISA Titer: 1:12500; Positive  
Control: Mouse Spleen