

Product datasheet for **TA329631**

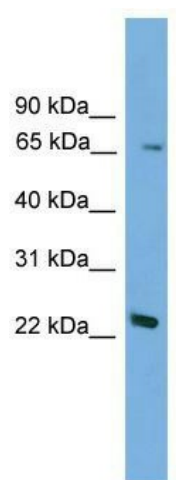
Foxn2 Rabbit Polyclonal Antibody

Product data:

Product Type:	Primary Antibodies
Applications:	WB
Recommended Dilution:	WB
Reactivity:	Mouse
Host:	Rabbit
Isotype:	IgG
Clonality:	Polyclonal
Immunogen:	The immunogen for anti-Foxn2 antibody: synthetic peptide corresponding to a region of Mouse. Synthetic peptide located within the following region: MGPVIGMTPDKRAETPGAEEKVAGLSQIYKMGSLPEAGDAARPKATLVGSE
Formulation:	Liquid. Purified antibody supplied in 1x PBS buffer with 0.09% (w/v) sodium azide and 2% sucrose. <i>Note that this product is shipped as lyophilized powder to China customers.</i>
Conjugation:	Unconjugated
Storage:	Store at -20°C as received.
Stability:	Stable for 12 months from date of receipt.
Predicted Protein Size:	23 kDa
Gene Name:	forkhead box N2
Database Link:	NP_851305 Entrez Gene 14236 Mouse
Background:	The function of this protein remains unknown.
Synonyms:	HTLF
Note:	Immunogen sequence homology: Dog: 100%; Rat: 100%; Horse: 100%; Mouse: 100%; Bovine: 100%; Pig: 92%; Human: 92%; Rabbit: 92%; Guinea pig: 85%



[View online »](#)

Product images:

WB Suggested Anti-Foxn2 Antibody Titration: 0.2-1 ug/ml; Positive Control: Mouse liver