

Product datasheet for **TA329629**

Slc2a12 Rabbit Polyclonal Antibody

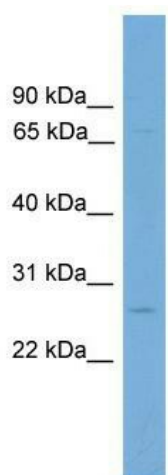
Product data:

Product Type:	Primary Antibodies
Applications:	WB
Recommended Dilution:	WB
Reactivity:	Mouse
Host:	Rabbit
Isotype:	IgG
Clonality:	Polyclonal
Immunogen:	The immunogen for anti-Slc2a12 antibody: synthetic peptide corresponding to a region of Mouse. Synthetic peptide located within the following region: VLFIPETKGC SLEQISVELAKANYVKNNICFMSHHQEELVPTQLQKRKPQ
Formulation:	Liquid. Purified antibody supplied in 1x PBS buffer with 0.09% (w/v) sodium azide and 2% sucrose.
Conjugation:	Unconjugated
Storage:	Store at -20°C as received.
Stability:	Stable for 12 months from date of receipt.
Predicted Protein Size:	67 kDa
Gene Name:	solute carrier family 2 (facilitated glucose transporter), member 12
Database Link:	NP_849265 Entrez Gene 353169 Mouse Q8BFW9
Background:	Facilitative glucose transporter
Synonyms:	GLUT-12; GLUT8; GLUT12
Note:	Immunogen sequence homology: Mouse: 100%; Rabbit: 100%; Dog: 93%; Pig: 93%; Rat: 93%; Goat: 86%; Horse: 86%; Human: 86%; Bovine: 86%



[View online »](#)

Product images:



WB Suggested Anti-Slc2a12 Antibody Titration:
0.2-1 ug/ml; Positive Control: Mouse Spleen