

## Product datasheet for **TA329627**

### Radil Rabbit Polyclonal Antibody

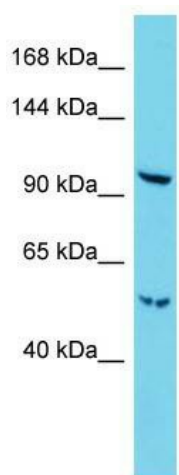
#### Product data:

Product Type:	Primary Antibodies
Applications:	WB
Recommended Dilution:	WB
Reactivity:	Mouse
Host:	Rabbit
Isotype:	IgG
Clonality:	Polyclonal
Immunogen:	The immunogen for Anti-Radil antibody is: synthetic peptide directed towards the C-terminal region of Human Radil. Synthetic peptide located within the following region: PPHSLPVTGAPRAQGPPGRQPTRGDRRGSQAGSLHTDSSCMLTPPSTPLG
Formulation:	Liquid. Purified antibody supplied in 1x PBS buffer with 0.09% (w/v) sodium azide and 2% sucrose. <i>Note that this product is shipped as lyophilized powder to China customers.</i>
Purification:	Affinity Purified
Conjugation:	Unconjugated
Storage:	Store at -20°C as received.
Stability:	Stable for 12 months from date of receipt.
Predicted Protein Size:	91 kDa
Gene Name:	Ras association and DIL domains
Database Link:	<a href="#">NP_001276517</a> <a href="#">Entrez Gene 231858 Mouse</a> <a href="#">Q69Z89</a>
Background:	Radil is a downstream effector of Rap required for cell adhesion and migration of neural crest precursors during development.
Synonyms:	FLJ10324; FLJ60975; KIAA1849; MGC161589
Note:	Immunogen sequence homology: Rat: 100%; Mouse: 100%; Pig: 92%; Guinea pig: 92%



[View online »](#)

## Product images:



Host: Rabbit; Target Name: Radil; Sample Tissue: Mouse Lung lysates; Antibody Dilution: 1.0ug/ml