

## Product datasheet for **TA329624**

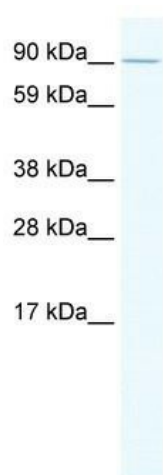
### E2f7 Rabbit Polyclonal Antibody

#### Product data:

|                         |   |
|-------------------------|---|
| Product Type:           | Primary Antibodies  |
| Applications:           | WB  |
| Recommended Dilution:   | WB  |
| Reactivity:             | Mouse   |
| Host:                   | Rabbit  |
| Isotype:                | IgG   |
| Clonality:              | Polyclonal  |
| Immunogen:              | The immunogen for anti-E2F7 antibody: synthetic peptide directed towards the N terminal of mouse E2F7. Synthetic peptide located within the following region:<br>LFRPIENKEDAFVNSLQLDVAGDGAVDEYEKQRPSRKQKSLGLLCQKFLA |
| Formulation:            | Liquid. Purified antibody supplied in 1x PBS buffer with 0.09% (w/v) sodium azide and 2% sucrose.<br><i>Note that this product is shipped as lyophilized powder to China customers.</i>                             |
| Conjugation:            | Unconjugated  |
| Storage:                | Store at -20°C as received.   |
| Stability:              | Stable for 12 months from date of receipt.  |
| Predicted Protein Size: | 99 kDa  |
| Gene Name:              | E2F transcription factor 7  |
| Database Link:          | <a href="#">NP_848724</a><br><a href="#">Entrez Gene 52679 Mouse Q6S7F2</a>   |
| Background:             | E2F7 is a E2F family member. It can block the E2F-dependent activation of a subset of E2F target genes as well as mitigate cellular proliferation of mouse embryo fibroblasts                                       |
| Synonyms:               | E2F-7; FLJ12981   |
| Note:                   | Immunogen sequence homology: Pig: 100%; Mouse: 100%; Guinea pig: 100%; Dog: 93%; Rat: 93%; Horse: 93%; Human: 93%; Bovine: 93%; Rabbit: 93%   |



[View online »](#)

**Product images:**

WB Suggested Anti-E2F7 Antibody Titration: 2.5 ug/ml; ELISA Titer: 1:312500; Positive Control: SP2/0 cell lysate