

Product datasheet for **TA329623**

E2f7 Rabbit Polyclonal Antibody

Product data:

Product Type:	Primary Antibodies
Applications:	IHC, WB
Recommended Dilution:	WB, IHC
Reactivity:	Mouse, Human
Host:	Rabbit
Isotype:	IgG
Clonality:	Polyclonal
Immunogen:	The immunogen for anti-E2f7 antibody: synthetic peptide directed towards the N terminal of mouse E2f7. Synthetic peptide located within the following region: MEVNCLTLKDLISPRQTRLDFIAEDAENAQKENIFVDRSRMTPKTPMKNE
Formulation:	Liquid. Purified antibody supplied in 1x PBS buffer with 0.09% (w/v) sodium azide and 2% sucrose. <i>Note that this product is shipped as lyophilized powder to China customers.</i>
Conjugation:	Unconjugated
Storage:	Store at -20°C as received.
Stability:	Stable for 12 months from date of receipt.
Predicted Protein Size:	99 kDa
Gene Name:	E2F transcription factor 7
Database Link:	NP_848724 Entrez Gene 144455 Human Entrez Gene 52679 Mouse Q6S7F2
Background:	E2F7 is a E2F family member. It can block the E2F-dependent activation of a subset of E2F target genes as well as mitigate cellular proliferation of mouse embryo fibroblasts
Synonyms:	E2F-7; FLJ12981
Note:	Immunogen sequence homology: Mouse: 100%; Bovine: 93%; Pig: 92%; Dog: 86%; Rat: 86%; Human: 86%; Horse: 85%; Rabbit: 79%

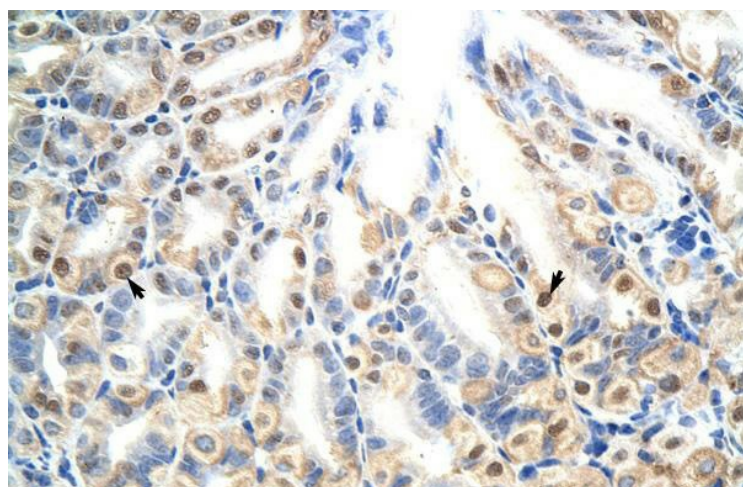


[View online »](#)

Product images:



WB Suggested Anti-E2f7 Antibody Titration: 0.2-1 ug/ml; Positive Control: SP2/0 cell lysate



Mouse stomach