

Product datasheet for **TA329622**

Klf11 Rabbit Polyclonal Antibody

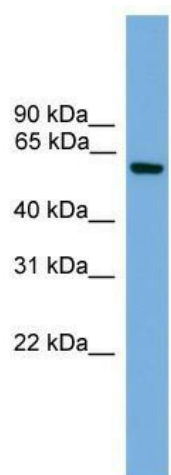
Product data:

Product Type:	Primary Antibodies
Applications:	WB
Recommended Dilution:	WB
Reactivity:	Mouse
Host:	Rabbit
Isotype:	IgG
Clonality:	Polyclonal
Immunogen:	The immunogen for anti-Klf11 antibody: synthetic peptide corresponding to a region of Mouse. Synthetic peptide located within the following region: PASGSSCRAVMTSVIRHTGESPAPTRFPTGPTQEQRASDSGEGQERLLDH
Formulation:	Liquid. Purified antibody supplied in 1x PBS buffer with 0.09% (w/v) sodium azide and 2% sucrose. <i>Note that this product is shipped as lyophilized powder to China customers.</i>
Conjugation:	Unconjugated
Storage:	Store at -20°C as received.
Stability:	Stable for 12 months from date of receipt.
Predicted Protein Size:	54 kDa
Gene Name:	Kruppel-like factor 11
Database Link:	NP_848134 Entrez Gene 194655 Mouse Q8K1S5
Background:	Klf11 is a transcription factor. Klf11 activates the epsilon- and gamma-globin gene promoters and, to a much lower degree, the beta-globin gene and represses promoters containing SP1-like binding sites inhibiting cell growth. Klf11 represses transcription of SMAD7 which enhances TGF-beta signaling. Klf11 also induces apoptosis.
Synonyms:	FKLF; FKLF1; MODY7; TIEG-2; TIEG2; Tieg3
Note:	Immunogen sequence homology: Mouse: 100%; Rat: 92%



[View online »](#)

Product images:



WB Suggested Anti-Klf11 Antibody Titration: 0.2-1 ug/ml; Positive Control: Mouse Brain