

## Product datasheet for **TA329621**

### Tcf15 Rabbit Polyclonal Antibody

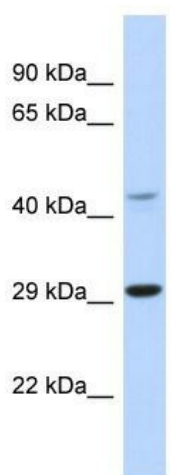
#### Product data:

Product Type:	Primary Antibodies
Applications:	WB
Recommended Dilution:	WB
Reactivity:	Mouse
Host:	Rabbit
Isotype:	IgG
Clonality:	Polyclonal
Immunogen:	The immunogen for Anti-Tcf15 antibody is: synthetic peptide directed towards the N-terminal region of Mouse Tcf15. Synthetic peptide located within the following region: EKTPGGADGTRTRADGVAKGAGGAGPDGAPEARAKPTVRVRLDRFNSM
Formulation:	Liquid. Purified antibody supplied in 1x PBS buffer with 0.09% (w/v) sodium azide and 2% sucrose.
Purification:	Affinity Purified
Conjugation:	Unconjugated
Storage:	Store at -20°C as received.
Stability:	Stable for 12 months from date of receipt.
Predicted Protein Size:	30 kDa
Gene Name:	transcription factor-like 5 (basic helix-loop-helix)
Database Link:	<a href="#">NP_839985</a> <a href="#">Entrez Gene 277353 Mouse</a>
Background:	The function of this protein remains unknown.
Synonyms:	CHA; E2BP-1; E2BP1; Figlb; MGC46135
Note:	Immunogen sequence homology: Rat: 100%; Mouse: 100%



[View online »](#)

## Product images:



Host: Rabbit  
Target Name: Tcf15  
Sample Tissue: Mouse Spleen Lysate  
Antibody Dilution: 1.0 $\mu$ g/ml

Host: Rabbit; Target Name: Tcf15; Sample Tissue:  
Mouse Spleen lysates; Antibody Dilution:  
1.0ug/ml