

Product datasheet for **TA329620**

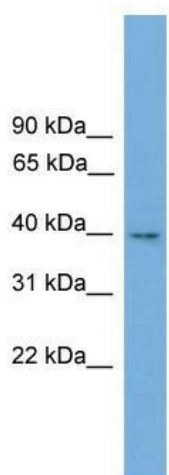
Tmem130 Rabbit Polyclonal Antibody

Product data:

Product Type:	Primary Antibodies
Applications:	WB
Recommended Dilution:	WB
Reactivity:	Mouse
Host:	Rabbit
Isotype:	IgG
Clonality:	Polyclonal
Immunogen:	The immunogen for anti-Tmem130 antibody: synthetic peptide corresponding to a region of Mouse. Synthetic peptide located within the following region: FTVKVRVVAEWEQIKPDTTKGTIQKTGDFSASLDLRESLQGIQLGPTLL
Formulation:	Liquid. Purified antibody supplied in 1x PBS buffer with 0.09% (w/v) sodium azide and 2% sucrose.
Conjugation:	Unconjugated
Storage:	Store at -20°C as received.
Stability:	Stable for 12 months from date of receipt.
Predicted Protein Size:	46 kDa
Gene Name:	transmembrane protein 130
Database Link:	NP_808403 Entrez Gene 243339 Mouse Q6NXM3
Background:	The function of this protein remains unknown.
Synonyms:	DKFZp761L1417; FLJ42643
Note:	Immunogen sequence homology: Mouse: 100%; Rat: 93%; Pig: 79%

[View online »](#)

Product images:



WB Suggested Anti-Tmem130 Antibody Titration:
0.2-1 ug/ml; Positive Control: Mouse Thymus