

## Product datasheet for **TA329618**

### Mkx Rabbit Polyclonal Antibody

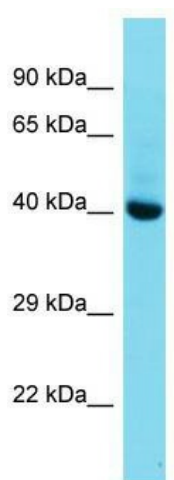
#### Product data:

Product Type:	Primary Antibodies
Applications:	WB
Recommended Dilution:	WB
Reactivity:	Mouse
Host:	Rabbit
Isotype:	IgG
Clonality:	Polyclonal
Immunogen:	The immunogen for Anti-Mkx antibody is: synthetic peptide directed towards the C-terminal region of Mouse Mkx. Synthetic peptide located within the following region: SNEFEEELVSPSSSETEGTFVYRTDTPDIGSTKGDSAANRRGSPKDDTYW
Formulation:	Liquid. Purified antibody supplied in 1x PBS buffer with 0.09% (w/v) sodium azide and 2% sucrose. <i>Note that this product is shipped as lyophilized powder to China customers.</i>
Purification:	Affinity Purified
Conjugation:	Unconjugated
Storage:	Store at -20°C as received.
Stability:	Stable for 12 months from date of receipt.
Predicted Protein Size:	38 kDa
Gene Name:	mohawk homeobox
Database Link:	<a href="#">NP_808263</a> <a href="#">Entrez Gene 210719 Mouse</a> <a href="#">Q8BIA3</a>
Background:	The function of this protein remains unknown.
Synonyms:	C10orf48; IFRX; IRXL1; MGC39616; OTTHUMP00000019374
Note:	Immunogen sequence homology: Mouse: 100%



[View online »](#)

## Product images:



Host: Rabbit; Target Name: Mkx; Sample Tissue: Mouse Liver lysates; Antibody Dilution: 1.0ug/ml