

Product datasheet for **TA329614**

Esrp2 Rabbit Polyclonal Antibody

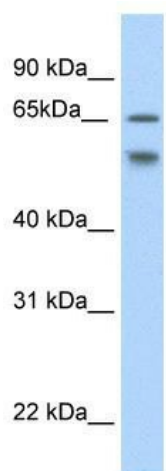
Product data:

Product Type:	Primary Antibodies
Applications:	WB
Recommended Dilution:	WB
Reactivity:	Mouse
Host:	Rabbit
Isotype:	IgG
Clonality:	Polyclonal
Immunogen:	The immunogen for anti-RBM35B antibody: synthetic peptide directed towards the N terminal of mouse RBM35B. Synthetic peptide located within the following region: EPRSRQVGTLHKSLVRAEAAAALSPQCREASGLSADSLARAESLDKVLQQF
Formulation:	Liquid. Purified antibody supplied in 1x PBS buffer with 0.09% (w/v) sodium azide and 2% sucrose. <i>Note that this product is shipped as lyophilized powder to China customers.</i>
Conjugation:	Unconjugated
Storage:	Store at -20°C as received.
Stability:	Stable for 12 months from date of receipt.
Predicted Protein Size:	79 kDa
Gene Name:	epithelial splicing regulatory protein 2
Database Link:	NP_789808 Entrez Gene 77411 Mouse Q8K0G8
Background:	The function remains unknown.
Synonyms:	FLJ21918; FLJ22248; RBM35B
Note:	Immunogen sequence homology: Dog: 100%; Rat: 100%; Human: 100%; Mouse: 100%; Rabbit: 100%; Pig: 93%; Bovine: 93%; Guinea pig: 93%



[View online »](#)

Product images:



WB Suggested Anti-RBM35B Antibody Titration:
2.5 ug/ml; Positive Control: NIH/3T3 cell lysate