

Product datasheet for **TA329613**

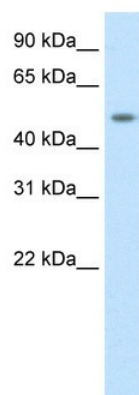
DMRTA1 Rabbit Polyclonal Antibody

Product data:

Product Type:	Primary Antibodies
Recommended Dilution:	WB
Reactivity:	Mouse
Host:	Rabbit
Isotype:	IgG
Clonality:	Polyclonal
Immunogen:	The immunogen for anti-DMRTA1 antibody: synthetic peptide directed towards the N terminal of mouse DMRTA1. Synthetic peptide located within the following region: LRRQQAQEESEARGLHRLLYQGSSGGAQASGGSGRTEPQVLNNPMAVA
Formulation:	Liquid. Purified antibody supplied in 1x PBS buffer with 0.09% (w/v) sodium azide and 2% sucrose.
Conjugation:	Unconjugated
Storage:	Store at -20°C as received.
Stability:	Stable for 12 months from date of receipt.
Predicted Protein Size:	54 kDa
Gene Name:	DMRT like family A1
Database Link:	NP_071443 Entrez Gene 63951 Human Q5VZB9
Background:	Dmrt1 is a DM domain containing transcription factors (DM = dsx and mab-3) and may be involved in sexual development
Synonyms:	DMO; DMRT4
Note:	Immunogen sequence homology: Mouse: 100%; Rat: 92%



[View online »](#)

Product images:

WB Suggested Anti-DMRTA1 Antibody Titration:
0.2-1 ug/ml
ELISA Titer: 1:1562500
Positive Control: NIH/3T3 cell lysate