

Product datasheet for **TA329611**

Rbfox2 Rabbit Polyclonal Antibody

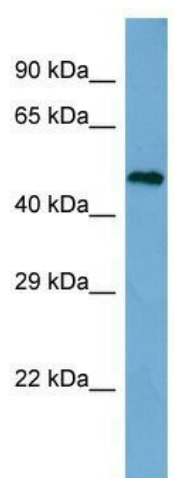
Product data:

Product Type:	Primary Antibodies
Applications:	WB
Recommended Dilution:	WB
Reactivity:	Mouse
Host:	Rabbit
Isotype:	IgG
Clonality:	Polyclonal
Immunogen:	The immunogen for Anti-Rbfox2 antibody is: synthetic peptide directed towards the N-terminal region of Mouse Rbfox2. Synthetic peptide located within the following region: PVPGAGADGPEPGLSKRPRTEEAADGGMQNEPLTPGYHGFARDGQGNQE
Formulation:	Liquid. Purified antibody supplied in 1x PBS buffer with 0.09% (w/v) sodium azide and 2% sucrose. <i>Note that this product is shipped as lyophilized powder to China customers.</i>
Conjugation:	Unconjugated
Storage:	Store at -20°C as received.
Stability:	Stable for 12 months from date of receipt.
Predicted Protein Size:	47 kDa
Gene Name:	RNA binding protein, fox-1 homolog (C. elegans) 2
Database Link:	NP_001104297 Entrez Gene 93686 Mouse Q8BP71
Background:	Rbm9 is a RNA-binding protein that regulates alternative splicing events by binding to 5'-UGCAUGU-3' elements. Rbm9 prevents binding of U2AF2 to the 3'-splice site. Rbm9 regulates alternative splicing of tissue-specific exons and of differentially spliced exons during erythropoiesis. Rbm9 seems to act as a coregulatory factor of ER-alpha.
Synonyms:	2810460A15Rik; AA407676; A118529; Fbm2; Fxh; Hrnbp2; Rbm9
Note:	Immunogen sequence homology: Rat: 100%; Mouse: 100%; Pig: 79%; Human: 79%



[View online »](#)

Product images:



Host: Rabbit; Target Name: Rbfox2; Sample
Tissue: NIH-3T3 Whole Cell lysates; Antibody
Dilution: 1.0ug/ml