

Product datasheet for **TA329610**

Cphx1 Rabbit Polyclonal Antibody

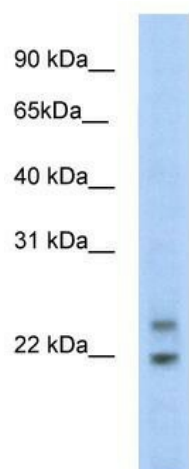
Product data:

Product Type:	Primary Antibodies
Applications:	WB
Recommended Dilution:	WB
Reactivity:	Mouse
Host:	Rabbit
Isotype:	IgG
Clonality:	Polyclonal
Immunogen:	The immunogen for anti-C330003B14RIK antibody: synthetic peptide directed towards the N terminal of mouse C330003B14RIK. Synthetic peptide located within the following region: MLSKNFPGAPETKDNRSKARKRYGSRNSKPRHKFSRDELKRLKQEFAYAP
Formulation:	Liquid. Purified antibody supplied in 1x PBS buffer with 0.09% (w/v) sodium azide and 2% sucrose. <i>Note that this product is shipped as lyophilized powder to China customers.</i>
Conjugation:	Unconjugated
Storage:	Store at -20°C as received.
Stability:	Stable for 12 months from date of receipt.
Predicted Protein Size:	20 kDa
Gene Name:	cytoplasmic polyadenylated homeobox 1
Database Link:	NP_780551 Entrez Gene 105594 Mouse
Background:	The function remains unknown.
Synonyms:	AU019881; AU023336; C80129; C330003B14Rik; Cphx; Eso-1
Note:	Immunogen sequence homology: Mouse: 100%



[View online »](#)

Product images:



WB Suggested Anti-C330003B14RIK Antibody
Titration: 5.0ug/ml; Positive Control: SP2/0 cell
lysate