

Product datasheet for **TA329609**

Prox2 Rabbit Polyclonal Antibody

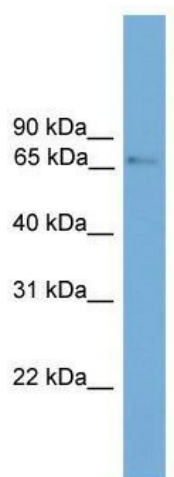
Product data:

Product Type:	Primary Antibodies
Applications:	WB
Recommended Dilution:	WB
Reactivity:	Mouse
Host:	Rabbit
Isotype:	IgG
Clonality:	Polyclonal
Immunogen:	The immunogen for anti-Prox2 antibody: synthetic peptide directed towards the n terminal of mouse Prox2. Synthetic peptide located within the following region: MDPPAAVLLPPQSRCTHLAEETCMDQERSPATAEAGRDSFPSGQLPSSS
Formulation:	Liquid. Purified antibody supplied in 1x PBS buffer with 0.09% (w/v) sodium azide and 2% sucrose.
Conjugation:	Unconjugated
Storage:	Store at -20°C as received.
Stability:	Stable for 12 months from date of receipt.
Predicted Protein Size:	66 kDa
Gene Name:	prospero homeobox 2
Database Link:	NP_780407 Entrez Gene 73422 Mouse Q8BII1
Background:	Prox2 is a transcription regulator. Prox2 does not seem to be essential for embryonic development and postnatal survival.
Synonyms:	FLJ36749; PROX-2
Note:	Immunogen sequence homology: Mouse: 100%; Rat: 79%



[View online »](#)

Product images:



WB Suggested Anti-Prox2 Antibody Titration: 0.2-1 ug/ml; Positive Control: Mouse Brain