

Product datasheet for **TA329608**

Bola2 Rabbit Polyclonal Antibody

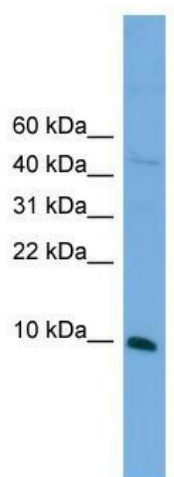
Product data:

Product Type:	Primary Antibodies
Applications:	WB
Recommended Dilution:	WB
Reactivity:	Mouse
Host:	Rabbit
Isotype:	IgG
Clonality:	Polyclonal
Immunogen:	The immunogen for anti-Bola2 antibody: synthetic peptide directed towards the n terminal of mouse Bola2. Synthetic peptide located within the following region: MELSADYLRKLRQDLEAEHVEVEDTTLNRCATSFRLVVSAAKFEKPLL
Formulation:	Liquid. Purified antibody supplied in 1x PBS buffer with 0.09% (w/v) sodium azide and 2% sucrose.
Conjugation:	Unconjugated
Storage:	Store at -20°C as received.
Stability:	Stable for 12 months from date of receipt.
Predicted Protein Size:	10 kDa
Gene Name:	bolA-like 2 (E. coli)
Database Link:	NP_780312 Entrez Gene 66162 Mouse Q8BGS2
Background:	The function of this protein remains unknown.
Synonyms:	BOLA2A; My016
Note:	Immunogen sequence homology: Rat: 100%; Mouse: 100%; Goat: 86%; Human: 86%; Bovine: 86%; Rabbit: 86%



[View online »](#)

Product images:



WB Suggested Anti-Bola2 Antibody Titration: 0.2-1 ug/ml; Positive Control: SP2/0 cell lysate