

Product datasheet for **TA329607**

Helt Rabbit Polyclonal Antibody

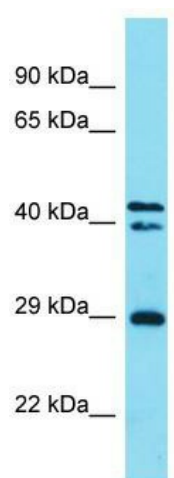
Product data:

Product Type:	Primary Antibodies
Applications:	WB
Recommended Dilution:	WB
Reactivity:	Mouse
Host:	Rabbit
Isotype:	IgG
Clonality:	Polyclonal
Immunogen:	The immunogen for Anti-Helt antibody is: synthetic peptide directed towards the C-terminal region of Mouse Helt. Synthetic peptide located within the following region: LPEPDFSYQLHAASPEFPGHSPGEATMFPQGATPGSFPWPPGAARSPALP
Formulation:	Liquid. Purified antibody supplied in 1x PBS buffer with 0.09% (w/v) sodium azide and 2% sucrose. <i>Note that this product is shipped as lyophilized powder to China customers.</i>
Conjugation:	Unconjugated
Storage:	Store at -20°C as received.
Stability:	Stable for 12 months from date of receipt.
Predicted Protein Size:	27 kDa
Gene Name:	helt bHLH transcription factor
Database Link:	NP_776150 Entrez Gene 234219 Mouse Q7TS99
Background:	Helt is a transcriptional repressor which binds preferentially to the canonical E box sequence 5'-CACGCG-3' and is required for the development of GABAergic neurons.
Synonyms:	HCM1228; HES-like; HESL; Heslike; Mgn
Note:	Immunogen sequence homology: Mouse: 100%; Rat: 93%; Horse: 85%; Human: 85%; Bovine: 85%; Pig: 77%; Rabbit: 77%; Guinea pig: 77%



[View online »](#)

Product images:



Host: Rabbit; Target Name: Helt; Sample Tissue:
Mouse Stomach lysates; Antibody Dilution:
1.0ug/ml