

## Product datasheet for **TA329599**

### **Cbfa2t2 Rabbit Polyclonal Antibody**

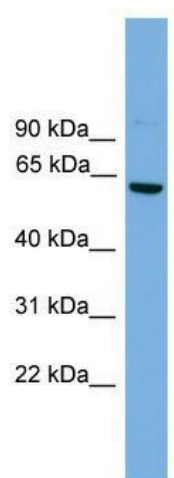
#### **Product data:**

|                                |   |
|--------------------------------|---|
| <b>Product Type:</b>           | Primary Antibodies  |
| <b>Applications:</b>           | WB  |
| <b>Recommended Dilution:</b>   | WB  |
| <b>Reactivity:</b>             | Mouse   |
| <b>Host:</b>                   | Rabbit  |
| <b>Isotype:</b>                | IgG   |
| <b>Clonality:</b>              | Polyclonal  |
| <b>Immunogen:</b>              | The immunogen for anti-Cbfa2t2 antibody: synthetic peptide corresponding to a region of Mouse. Synthetic peptide located within the following region:<br>AVLRRCQESDREELNYWKRRFNENTELRKTGTELVSQRQHSPGSTDSLND |
| <b>Formulation:</b>            | Liquid. Purified antibody supplied in 1x PBS buffer with 0.09% (w/v) sodium azide and 2% sucrose.<br><i>Note that this product is shipped as lyophilized powder to China customers.</i>                     |
| <b>Conjugation:</b>            | Unconjugated  |
| <b>Storage:</b>                | Store at -20°C as received.   |
| <b>Stability:</b>              | Stable for 12 months from date of receipt.  |
| <b>Predicted Protein Size:</b> | 66 kDa  |
| <b>Gene Name:</b>              | core-binding factor, runt domain, alpha subunit 2, translocated to, 2 (human)   |
| <b>Database Link:</b>          | <a href="#">NP_766448</a><br><a href="#">Entrez Gene 12396 Mouse</a><br><a href="#">O70374</a>  |
| <b>Background:</b>             | Cbfa2t2 may be a transcriptional corepressor.   |
| <b>Synonyms:</b>               | DKFZp313F2116; EHT; MTGR1; OTTHUMP00000030653; p85; ZMYND3  |
| <b>Note:</b>                   | Immunogen sequence homology: Rat: 100%; Mouse: 100%; Dog: 93%; Pig: 93%; Horse: 93%; Human: 93%; Bovine: 93%; Rabbit: 93%; Guinea pig: 92%  |



[View online »](#)

## Product images:



WB Suggested Anti-Cbfa2t2 Antibody Titration:  
0.2-1 ug/ml; ELISA Titer: 1:1562500; Positive  
Control: Mouse Brain