

Product datasheet for **TA329598**

Creb5 Rabbit Polyclonal Antibody

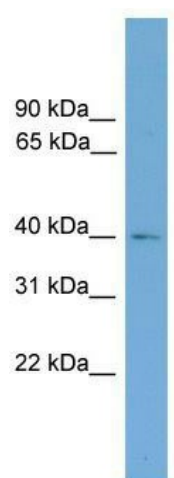
Product data:

Product Type:	Primary Antibodies
Applications:	WB
Recommended Dilution:	WB
Reactivity:	Mouse
Host:	Rabbit
Isotype:	IgG
Clonality:	Polyclonal
Immunogen:	The immunogen for anti-Creb5 antibody: synthetic peptide corresponding to a region of Mouse. Synthetic peptide located within the following region: HPQPHHQNHPPHHSHSLHAHPAHHQTSPHPPLPTGNQAQVSPATQQMQ
Formulation:	Liquid. Purified antibody supplied in 1x PBS buffer with 0.09% (w/v) sodium azide and 2% sucrose. <i>Note that this product is shipped as lyophilized powder to China customers.</i>
Conjugation:	Unconjugated
Storage:	Store at -20°C as received.
Stability:	Stable for 12 months from date of receipt.
Predicted Protein Size:	40 kDa
Gene Name:	cAMP responsive element binding protein 5
Database Link:	NP_766316 Entrez Gene 231991 Mouse Q8K1L0
Background:	Creb5 binds to the cAMP response element and activates transcription.
Synonyms:	CRE-BPA; CREB-5; CREBPA; H_GS165L15.1; OTTHUMP00000202431
Note:	Immunogen sequence homology: Rat: 93%; Human: 93%; Mouse: 93%; Rabbit: 93%; Dog: 86%; Pig: 86%; Horse: 86%; Guinea pig: 86%



[View online »](#)

Product images:



WB Suggested Anti-Creb5 Antibody Titration: 0.2-1 ug/ml; Positive Control: SP2/0 cell lysate