

Product datasheet for **TA329597**

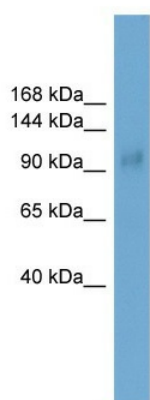
Skor1 Rabbit Polyclonal Antibody

Product data:

Product Type:	Primary Antibodies
Recommended Dilution:	WB
Reactivity:	Mouse
Host:	Rabbit
Isotype:	IgG
Clonality:	Polyclonal
Immunogen:	The immunogen for anti-Lbxcor1 antibody: synthetic peptide directed towards the middle region of mouse Lbxcor1. Synthetic peptide located within the following region: EPDKEDNHSTTADDLETRKSFSDQRSVSQSPANTDRGEDGLTLDVTGTQ
Formulation:	Liquid. Purified antibody supplied in 1x PBS buffer with 0.09% (w/v) sodium azide and 2% sucrose.
Conjugation:	Unconjugated
Storage:	Store at -20°C as received.
Stability:	Stable for 12 months from date of receipt.
Predicted Protein Size:	100 kDa
Gene Name:	SKI family transcriptional corepressor 1
Database Link:	NP_766034 Entrez Gene 207667 Mouse Q8BX46
Background:	Lbxcor1 inhibits BMP signaling. Lbxcor1 acts as a transcriptional corepressor of LBX1.
Synonyms:	AV273001; C230094B15Rik; Corl1; Lbxcor1
Note:	Immunogen sequence homology: Rat: 100%; Mouse: 100%; Dog: 93%; Pig: 93%; Horse: 93%; Bovine: 93%; Guinea pig: 93%; Human: 86%; Rabbit: 86%



[View online »](#)

Product images:

WB Suggested Anti-Lbxcor1 Antibody Titration:
0.2-1 ug/ml
Positive Control: Mouse Kidney