

## Product datasheet for **TA329596**

### Lcor Rabbit Polyclonal Antibody

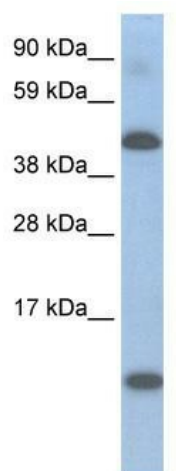
#### Product data:

Product Type:	Primary Antibodies
Applications:	WB
Recommended Dilution:	WB
Reactivity:	Mouse
Host:	Rabbit
Isotype:	IgG
Clonality:	Polyclonal
Immunogen:	The immunogen for anti-A630025C20RIK antibody: synthetic peptide directed towards the N terminal of mouse A630025C20RIK. Synthetic peptide located within the following region: QQFAAEYTSKTSSTQDPSQPNSTKNQSLPKASPVTTSTAATTQNPVLSK
Formulation:	Liquid. Purified antibody supplied in 1x PBS buffer with 0.09% (w/v) sodium azide and 2% sucrose. <i>Note that this product is shipped as lyophilized powder to China customers.</i>
Conjugation:	Unconjugated
Storage:	Store at -20°C as received.
Stability:	Stable for 12 months from date of receipt.
Predicted Protein Size:	48 kDa
Gene Name:	ligand dependent nuclear receptor corepressor
Database Link:	<a href="#">NP_742166</a> <a href="#">Entrez Gene 212391 Mouse</a> <a href="#">Q6ZPI3</a>
Background:	This protein was disclosed by the RIKEN Mouse Gene Encyclopaedia Project, a systematic approach to determining the full coding potential of the mouse genome, involves collection and sequencing of full length complementary DNAs and physical mapping of the corresponding genes to the mouse genome.
Synonyms:	FLJ38026; KIAA1795; MLR2; OTTHUMP00000020180; RP11-175O19.1
Note:	Immunogen sequence homology: Dog: 100%; Pig: 100%; Rat: 100%; Horse: 100%; Human: 100%; Mouse: 100%; Bovine: 100%; Rabbit: 100%; Guinea pig: 100%



[View online »](#)

## Product images:



WB Suggested Anti-A630025C20RIK Antibody  
Titration: 0.2-1 ug/ml; ELISA Titer: 1:62500;  
Positive Control: SP2/0 cell lysate