

Product datasheet for TA329594

Vgll2 Rabbit Polyclonal Antibody

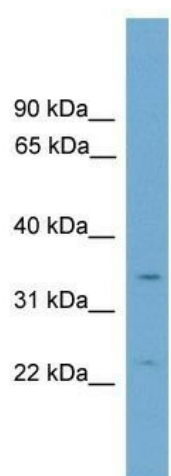
Product data:

Product Type:	Primary Antibodies
Applications:	WB
Recommended Dilution:	WB
Reactivity:	Mouse
Host:	Rabbit
Isotype:	IgG
Clonality:	Polyclonal
Immunogen:	The immunogen for anti-Vgll2 antibody: synthetic peptide corresponding to a region of Mouse. Synthetic peptide located within the following region: APASAPAPGSPPCELAAKGEPAGSAWAAPGGPFVSPTGDVAQSLGLSVDS
Formulation:	Liquid. Purified antibody supplied in 1x PBS buffer with 0.09% (w/v) sodium azide and 2% sucrose. <i>Note that this product is shipped as lyophilized powder to China customers.</i>
Conjugation:	Unconjugated
Storage:	Store at -20°C as received.
Stability:	Stable for 12 months from date of receipt.
Predicted Protein Size:	34 kDa
Gene Name:	vestigial like family member 2
Database Link:	NP_722481 Entrez Gene 215031 Mouse Q8BGW8
Background:	Vgll2 may act as a specific coactivator for the mammalian TEFs. May play a role in the development of skeletal muscles.
Synonyms:	Vgl-2; VGL2; VITO1
Note:	Immunogen sequence homology: Rat: 100%; Mouse: 100%; Dog: 92%; Human: 92%; Rabbit: 85%



[View online »](#)

Product images:



WB Suggested Anti-Vgll2 Antibody Titration: 0.2-1 ug/ml; ELISA Titer: 1:312500; Positive Control: SP2/0 cell lysate