

Product datasheet for **TA329591**

Mrtfa Rabbit Polyclonal Antibody

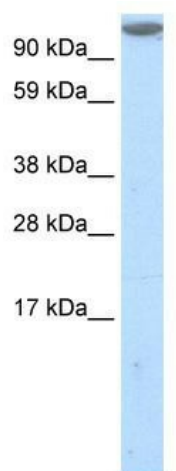
Product data:

Product Type:	Primary Antibodies
Applications:	WB
Recommended Dilution:	WB
Reactivity:	Mouse
Host:	Rabbit
Isotype:	IgG
Clonality:	Polyclonal
Immunogen:	The immunogen for anti-MKL1 antibody: synthetic peptide corresponding to a region of Mouse. Synthetic peptide located within the following region: QPLSQPGFPAPGPPAQMDLEHPPQPPFATPTSLLKKEPPGYEETVTQQPK
Formulation:	Liquid. Purified antibody supplied in 1x PBS buffer with 0.09% (w/v) sodium azide and 2% sucrose. <i>Note that this product is shipped as lyophilized powder to China customers.</i>
Conjugation:	Unconjugated
Storage:	Store at -20°C as received.
Stability:	Stable for 12 months from date of receipt.
Predicted Protein Size:	106 kDa
Gene Name:	MKL (megakaryoblastic leukemia)/myocardin-like 1
Database Link:	NP_694629 Entrez Gene 223701 Mouse Q8K4J6
Background:	MKL1 transduces cytoskeletal signals and induces smooth muscle cell differentiation from undifferentiated embryonic stem cells
Synonyms:	AMKL; BSAC; KIAA1438; MAL; MRTF-A; OTTHUMP00000199247
Note:	Immunogen sequence homology: Rat: 100%; Mouse: 100%; Dog: 86%; Pig: 86%; Horse: 86%; Bovine: 86%; Rabbit: 86%; Human: 79%; Zebrafish: 75%



[View online »](#)

Product images:



WB Suggested Anti-MKL1 Antibody Titration: 1.25 ug/ml; ELISA Titer: 1:1562500; Positive Control: NIH/3T3 cell lysate