

Product datasheet for **TA329589**

Ebf4 Rabbit Polyclonal Antibody

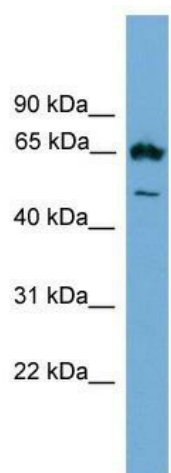
Product data:

Product Type:	Primary Antibodies
Applications:	WB
Recommended Dilution:	WB
Reactivity:	Mouse
Host:	Rabbit
Isotype:	IgG
Clonality:	Polyclonal
Immunogen:	The immunogen for anti-Ebf4 antibody: synthetic peptide directed towards the middle region of human Ebf4. Synthetic peptide located within the following region: ARSCGSASPRFAPSPGSQQSSYGSLGAGLGSYGAPGVTGLGVPGSPSFL
Formulation:	Liquid. Purified antibody supplied in 1x PBS buffer with 0.09% (w/v) sodium azide and 2% sucrose. <i>Note that this product is shipped as lyophilized powder to China customers.</i>
Conjugation:	Unconjugated
Storage:	Store at -20°C as received.
Stability:	Stable for 12 months from date of receipt.
Predicted Protein Size:	60 kDa
Gene Name:	early B cell factor 4
Database Link:	Entrez Gene 228598 Mouse Q8K4J2
Background:	The function of this protein remains unknown.
Synonyms:	COE4; EBF-4; KIAA1442; O/E-4; OE-4; RP5-860F19.3
Note:	Immunogen sequence homology: Pig: 100%; Rat: 100%; Horse: 100%; Mouse: 100%; Rabbit: 100%; Dog: 93%; Human: 92%; Bovine: 92%; Guinea pig: 92%



[View online »](#)

Product images:



WB Suggested Anti-Ebf4 Antibody Titration: 0.2-1 ug/ml; ELISA Titer: 1:1562500; Positive Control: SP2/0 cell lysate