

## Product datasheet for **TA329588**

### Glis1 Rabbit Polyclonal Antibody

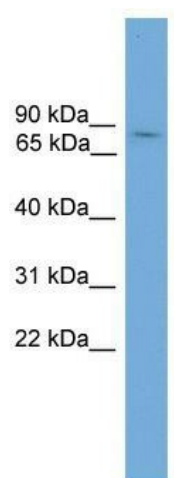
#### Product data:

Product Type:	Primary Antibodies
Applications:	WB
Recommended Dilution:	WB
Reactivity:	Mouse
Host:	Rabbit
Isotype:	IgG
Clonality:	Polyclonal
Immunogen:	The immunogen for anti-Glis1 antibody: synthetic peptide corresponding to a region of Mouse. Synthetic peptide located within the following region: DKRPKEAPGAPGQGRGPVSLGAHMAFRIAVSGGGCGDGNPLDLLPRLPVP
Formulation:	Liquid. Purified antibody supplied in 1x PBS buffer with 0.09% (w/v) sodium azide and 2% sucrose. <i>Note that this product is shipped as lyophilized powder to China customers.</i>
Conjugation:	Unconjugated
Storage:	Store at -20°C as received.
Stability:	Stable for 12 months from date of receipt.
Predicted Protein Size:	84 kDa
Gene Name:	GLIS family zinc finger 1
Database Link:	<a href="#">NP_671754</a> <a href="#">Entrez Gene 230587 Mouse</a> <a href="#">Q8K1M4</a>
Background:	Glis1 acts as both a repressor and activator of transcription. Glis1 binds to the consensus sequence 5'-GACCACCCAC-3'.
Synonyms:	FLJ36155; Gli5-like; Glis1-like
Note:	Immunogen sequence homology: Mouse: 100%; Rat: 93%; Dog: 91%; Rabbit: 86%; Pig: 79%; Bovine: 79%



[View online »](#)

## Product images:



WB Suggested Anti-Glis1 Antibody Titration: 0.2-1 ug/ml; Positive Control: Mouse Kidney