

Product datasheet for TA329587

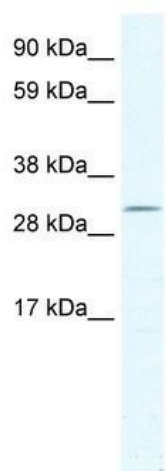
Dmrt2 Rabbit Polyclonal Antibody

Product data:

Product Type:	Primary Antibodies
Applications:	WB
Recommended Dilution:	WB
Reactivity:	Mouse
Host:	Rabbit
Isotype:	IgG
Clonality:	Polyclonal
Immunogen:	The immunogen for anti-DMRT2 antibody: synthetic peptide directed towards the C terminal of mouse DMRT2. Synthetic peptide located within the following region: RPSLPLKTNPFHSVFQQTLSDKSGPELNAPFVKEAFEETPKKHRECLVKE
Formulation:	Liquid. Purified antibody supplied in 1x PBS buffer with 0.09% (w/v) sodium azide and 2% sucrose. <i>Note that this product is shipped as lyophilized powder to China customers.</i>
Conjugation:	Unconjugated
Storage:	Store at -20°C as received.
Stability:	Stable for 12 months from date of receipt.
Predicted Protein Size:	37 kDa
Gene Name:	doublesex and mab-3 related transcription factor 2
Database Link:	NP_665830 Entrez Gene 226049 Mouse Q8BG36
Background:	DMRT2 is a protein disclosed by NIH MGC program
Synonyms:	DSXL-2; DSXL2; OTTHUMP00000020964; OTTHUMP00000020966; OTTHUMP00000020967
Note:	Immunogen sequence homology: Mouse: 100%; Dog: 86%; Pig: 86%; Rat: 86%; Human: 86%; Rabbit: 86%; Guinea pig: 86%; Bovine: 79%



[View online »](#)

Product images:

WB Suggested Anti-DMRT2 Antibody Titration: 2.5 ug/ml; ELISA Titer: 1:1562500; Positive Control: SP2/0 cell lysate