

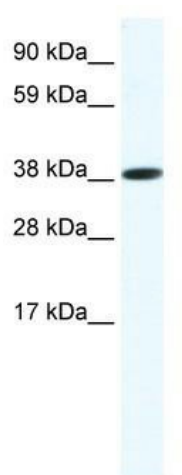
Product datasheet for TA329586

Obox6 Rabbit Polyclonal Antibody

Product data:

Product Type:	Primary Antibodies
Applications:	WB
Recommended Dilution:	WB
Reactivity:	Mouse
Host:	Rabbit
Isotype:	IgG
Clonality:	Polyclonal
Immunogen:	The immunogen for anti-OBOX6 antibody: synthetic peptide directed towards the middle region of mouse OBOX6. Synthetic peptide located within the following region: MALAVLVGVTANEIQWFKNHRASKRESLQNVPAALPETNGSSEAVSES
Formulation:	Liquid. Purified antibody supplied in 1x PBS buffer with 0.09% (w/v) sodium azide and 2% sucrose.
Conjugation:	Unconjugated
Storage:	Store at -20°C as received.
Stability:	Stable for 12 months from date of receipt.
Predicted Protein Size:	34 kDa
Gene Name:	oocyte specific homeobox 6
Database Link:	NP_663756 Entrez Gene 252830 Mouse
Background:	Obox6 belongs to the Obox family that represents a new family of tissue-specific homeobox genes preferentially expressed in gonads.
Synonyms:	D17Ert599e
Note:	Immunogen sequence homology: Mouse: 100%


[View online »](#)

Product images:


WB Suggested Anti-OBOX6 Antibody Titration:
 1.25 ug/ml; ELISA Titer: 1:1562500; Positive
 Control: SP2/0 cell lysate