

## Product datasheet for **TA329583**

### GLYATL2 Rabbit Polyclonal Antibody

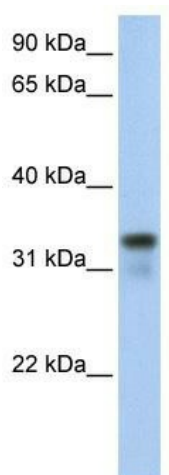
#### Product data:

Product Type:	Primary Antibodies
Applications:	WB
Recommended Dilution:	WB
Reactivity:	Human
Host:	Rabbit
Isotype:	IgG
Clonality:	Polyclonal
Immunogen:	The immunogen for anti-GLYATL2 antibody: synthetic peptide directed towards the middle region of human GLYATL2. Synthetic peptide located within the following region: LDEAIRKVATSKSVQVDYMKILFIPELPKHKHTSSNDKMELFEVDDDNK
Formulation:	Liquid. Purified antibody supplied in 1x PBS buffer with 0.09% (w/v) sodium azide and 2% sucrose.
Conjugation:	Unconjugated
Storage:	Store at -20°C as received.
Stability:	Stable for 12 months from date of receipt.
Predicted Protein Size:	34 kDa
Gene Name:	glycine-N-acyltransferase like 2
Database Link:	<a href="#">NP_659453</a> <a href="#">Entrez Gene 219970 Human</a> <a href="#">Q8WU03</a>
Background:	GLYATL2 belongs to the glycine N-acyltransferase family. GLYATL2 is a mitochondrial acyltransferase which transfers the acyl group to the N-terminus of glycine. It can conjugate a multitude of substrates to form a variety of N-acylglycines.
Synonyms:	BXMAS2-10; GATF-B
Note:	Immunogen sequence homology: Human: 100%



[View online »](#)

Product images:



WB Suggested Anti-GLYATL2 Antibody Titration:  
0.2-1 ug/ml; Positive Control: 721\_B cell lysate